

ADULTS ONLY
18+
2D MARKET



Futanari? What's that?

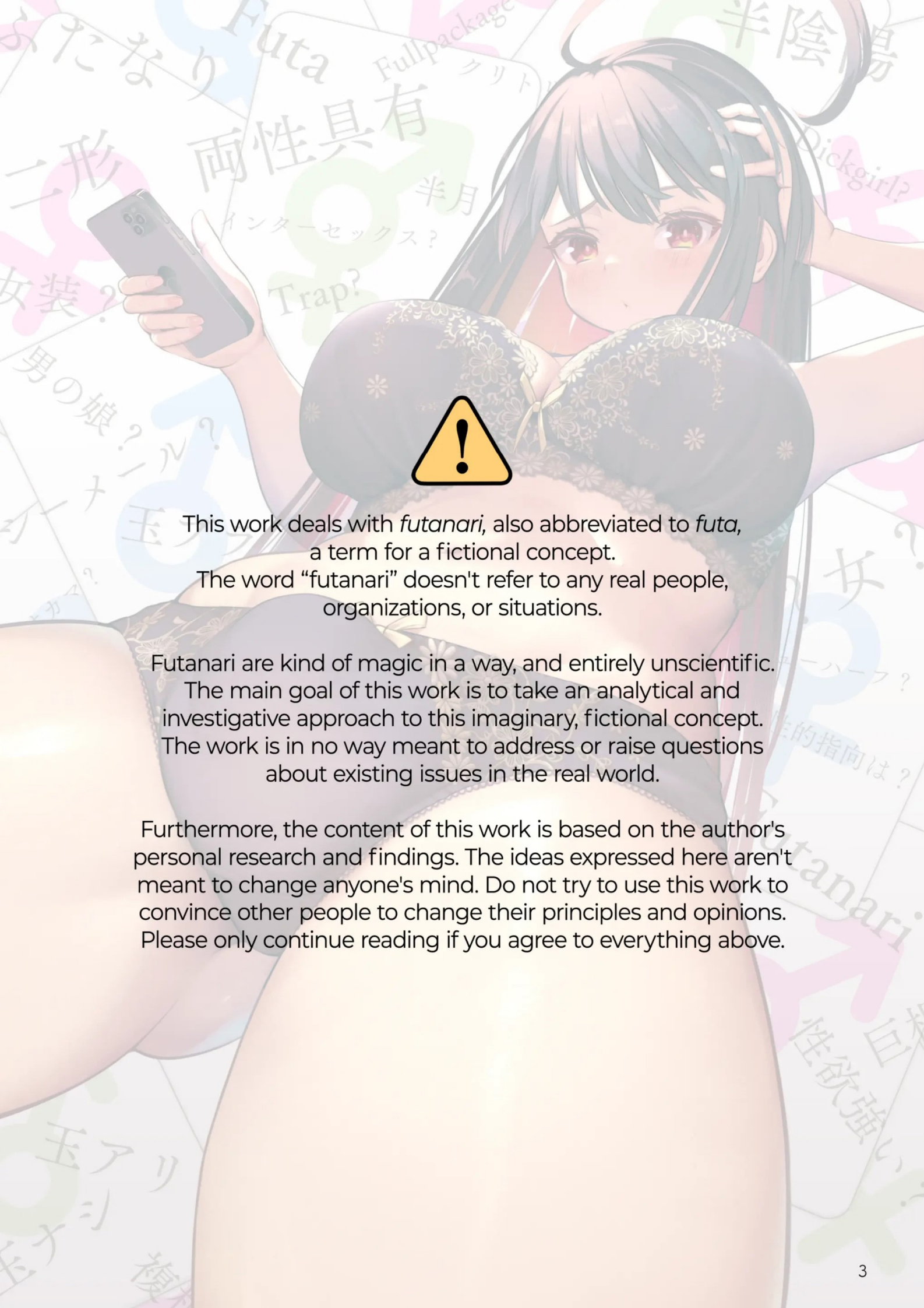
ねこあし

nekoarashi.com

也々

yana

ADULTS ONLY
18+
2D MARKET



This work deals with *futanari*, also abbreviated to *futa*, a term for a fictional concept.

The word “futanari” doesn't refer to any real people, organizations, or situations.

Futanari are kind of magic in a way, and entirely unscientific.

The main goal of this work is to take an analytical and investigative approach to this imaginary, fictional concept.

The work is in no way meant to address or raise questions about existing issues in the real world.

Furthermore, the content of this work is based on the author's personal research and findings. The ideas expressed here aren't meant to change anyone's mind. Do not try to use this work to convince other people to change their principles and opinions. Please only continue reading if you agree to everything above.

Before We Begin

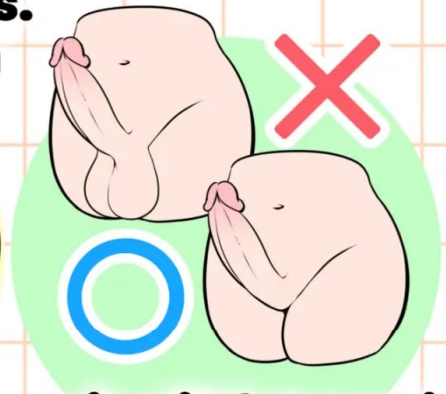
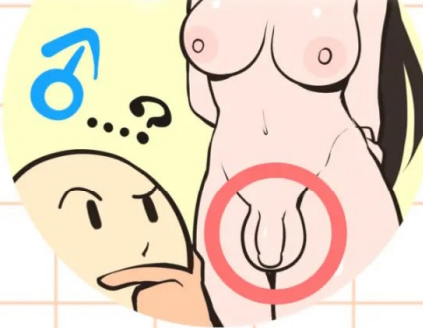
How much do you know about them?

Are you always getting into trouble because you don't know enough about futanari?



Is futanari a dirty word?

They have a penis. Does that mean they're men??



Is it still futanari without balls?



Are otoko no ko the same thing?

Do futanari have the biggest cocks?



Are you X if you like futanari?

I wrote this book to hopefully help you find the answer to these questions—and many more! Although I suppose I really just wanted to say my piece.



This book's discussion of futanari begins with broad strokes before going into more detail, and everything is accompanied by useful illustrations to help guide you.

If your first reaction to the title was "Futanari? Never heard of it!" I hope I can open the doors to a new world for you; on the other hand, if you said "I'm basically an expert!", you may yet make some new discoveries.

I hope you'll have fun learning more about futanari, and find yourself willing to share futanari research and creations of all kinds with the whole world.

INDEX

“Futanari”? What's that? 6

Let's first give a clear and concise definition of what makes a futanari a futanari. This is really all you'll need to know to answer the titular question.

What's not a futanari? 10

Otoko no ko, shemales, crossdressers... these and more, are definitely not futanari. Let's clear up some confusion with a streamlined explanation.

What are futanari worlds like? 12

In some works of fiction, futanari are naturally occurring, in others, futanari are created; they can be rare exceptions, or normal people. Let's explore some possible futanari-featuring worlds and the differences between them.

Are futanari only about sex? 14

With imaginary bodies and a focus on their lower half, many works featuring futanari deal with sexual situations... But there are androgynous characters in media for all ages.

How is the word futanari used? 16

The word futanari is also often used as-is outside of Japan, but it may be more complicated than you think.

Who likes futanari? 20

People who like futanari are sexually attracted to them! Right? Wrong!! Let's clear the air about this common misconception.

What are futanari like? 22

All right, so futanari make more sense now. Let's get to the sexy part-If that's what you're thinking, this is for you! Let's explore some settings and ideas surrounding futanari.

How do I draw futanari? 34

Futanari being a fictional concept doesn't mean we can draw them carelessly: The more attention to detail we put into our works, the better they'll turn out. In this section, I'll talk about how to be aware of certain key principles that might help you improve.

Futanari? What's that?

A futanari is...

Someone who has both male and female genitalia.

That's it.

Is it really that simple?

Those who only have a vague grasp of the concept might be befuddled by this, but that really is the central idea they all have in common. Little details like presence or absence of testicles don't affect that core concept.

I didn't come up with this definition myself, nor can any particular person be credited with it; but ask anyone, and the single feature you'll find uniting all descriptions of futanari is precisely that: Futanari have both male and female genitalia.

Why is the definition so vague?

In Japanese, there are many ways to write futanari, like 二成, 双成, or 二形. All of these mean the same thing, though: "to be of" or "possess two forms, two aspects." When you understand this fact, the implications of the term become clear. Around the world, however, many don't know the meaning of the kanji or the etymology of the word, and obviously can't be expected to.

Even so, this definition can naturally raise several questions: "Is such-and-such character not a futanari then?" or "That character only has one set of genitals, but some in the West call them futa anyway!" But don't worry! These initial paragraphs are only here to introduce the basic concept in its purest form. I'm going to take my time explaining and analyzing the topic in more detail as we continue, so please! Keep on reading.





The most accredited etymology of the word *futanari*

A theory regarding the origin of the word comes from an emakimono* called Yamai No Soushi, or Scroll of Illness, drawn between the end of the Heian period and the beginning of the Kamakura period (c.a. 1185 AD). One of its sequences depicts individuals possessing both male and female genitalia, and uses the word futanari (二成) to describe them. Here's the passage in question:

"Raise their robes in secret, and you shall see how they possess both male and female roots. Truly, they are of both forms."

ひそかにきぬをかきあげてみければ 男女の根 ともにありけり これ 二形 (ふたなり) のものなり

While the scroll's sequences describe rare or strange diseases, being a futanari is no longer considered an illness in contemporary fiction; the term is instead used to describe phenomena like androgyny or hermaphroditism in a more benign way.

※The artwork for this page is inspired by the original emakimono drawing, but drastically alters a few things (like the appearance of the characters)

Tip Slip

The text portion of the Scroll of Illness calls all genitalia "roots" regardless of sex, using "male root" for men and "female root" for women throughout. That's why the author says "possessing both male and female roots" when describing futanari.



So what are futanari? Men or women?

Futanari as a term doesn't denote a gender distinction, solely a physical one. In short, regardless of whether they present other typical male or female anatomical characteristics, an individual is a futanari if they possess both sets of genitalia. Taking a biological perspective, one might be tempted to say that such a person is both genders at once; however, depending on the fictional universe in which a given futanari resides, the mere presence of two sets of genitalia might not be enough to make that statement true.

Futanari characters often have supernatural abilities, for example the ability to temporarily grow a penis. For this reason, while they may appear to have distinct gendered characteristics when viewed through a real-world lens, futanari reside in worlds fundamentally different from our own. In conclusion, even though futanari is an umbrella term that collects several varieties of character, definitions of their gender can vary wildly depending on the rules of the fictional worlds futanari inhabit.

haniwari

半月 "half-moon"

han'in'you

半陰陽 "between yin and yang" or "between sun and moon" (hermaphrodite, intersexual)

ryouseiguyuu

両性具有 "of both sexes" (androgynous, hermaphroditic)

shiyuudoutai

雌雄同体 "male and female in the same body" (hermaphroditism)

インターセックス

Intersex

アンドロギュノス

Androgynous

and many more... But what's the difference?

All these terms have different nuances

Haniwari uses the metaphor of the half moon to denote a **sex that exists in the middle**.

Han'in'you uses the Chinese Yin and Yang shapes and concept to denote a **sex that exists in the middle**.

Ryouseiguyuu means **possessing both male and female genitalia**. The kanji are to be taken at face value.

Shiyuudoutai denotes **species in which hermaphroditism is the norm**. The kanji are to be taken at face value.

Intersex (インターセックス) borrows from English to denote a **sex that exists in the middle**.

Androgynous (アンドロギュノス) borrows from Greek instead to denote someone of **both sexes** at once. ("andro" means man, "gyné" means woman)

While all these terms broadly mean the same things, they all come from different places and are used in different contexts. For example, hermaphroditism (shiyuudoutai) is often found in biology, while futanari is mainly used adult fiction. By contrast, haniwari (half-moon,) han'in'you (between sun and moon,) and ryouseiguyuu (of both sexes) are found widely outside of adult fiction as well.

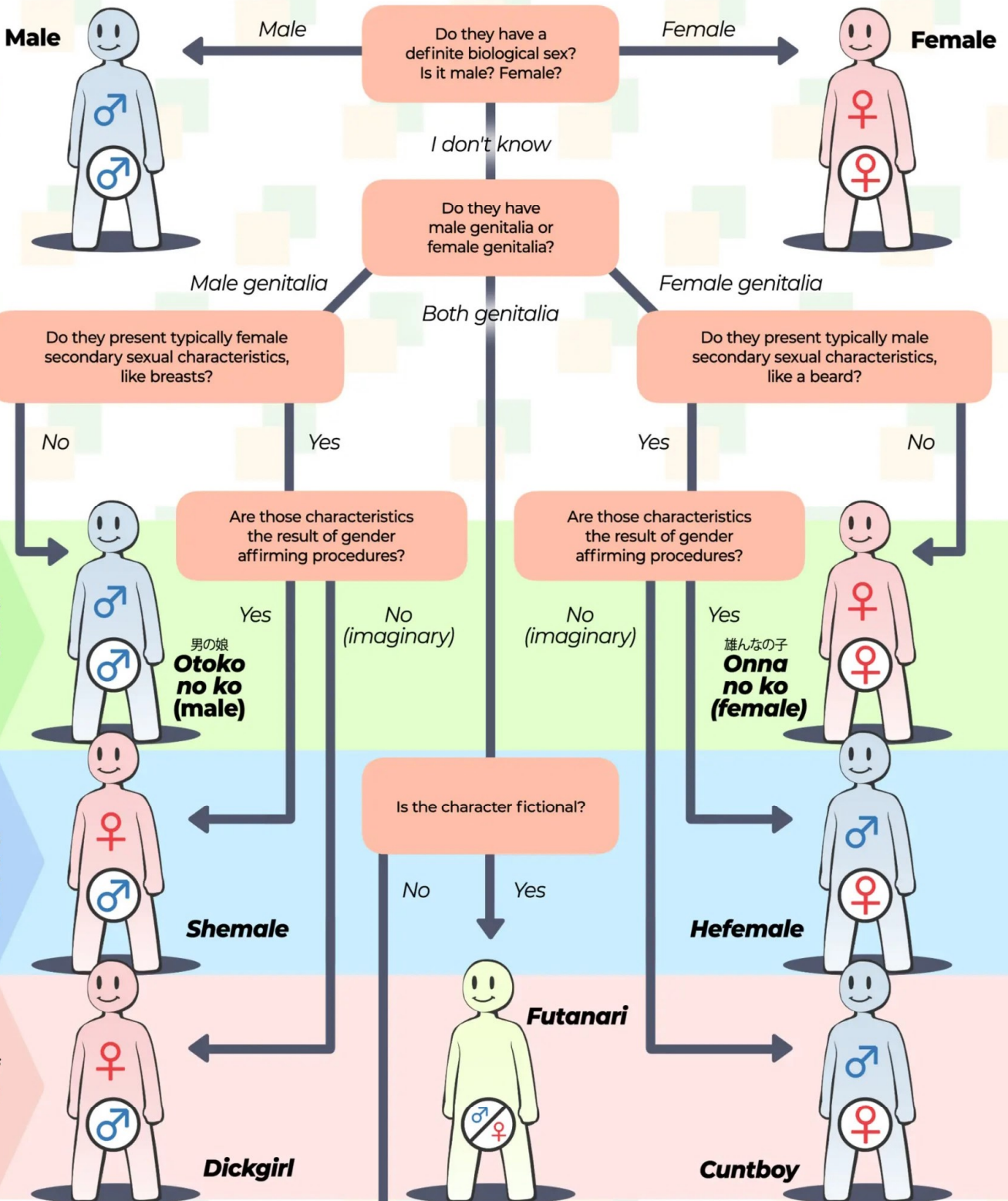
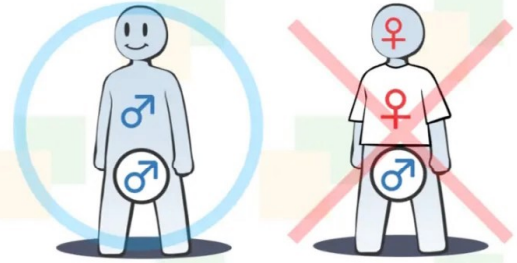
When it comes to real people and not fictional characters, the most commonly used terms tend to be han'in'you, intersex, and DSD (disorder of sex development); but regardless of what's common, it's important to note that the connotations of words, especially regarding what suggests ailment or disorder, vary from person to person in real life, and we must separate the concept of fictional characters with perfectly working intersex genitalia from real-world people. **This work isn't trying to establish correct and incorrect terminology for real, existing people.**

Using any of these words to refer to a real person rather than a fictional character might lead to misunderstandings or even cause you to discriminate against or harass another human being, so make sure you pay a great deal of attention if you ever find yourself in such a position.

What may seem like futanari, but isn't?

Let's shed some light on unrelated terms that may cause confusion.

There are many words that cause confusion when talking about futanari: *otoko no ko*, *shemale*, *dickgirl*... I created this chart in an attempt to clear some such doubts. We'll be answering these questions focusing solely on physical characteristics, ignoring traits such as clothes, hairstyles, or facial features. When following this chart, assume the character in question is a young person and, except where traits are specifically mentioned, they are fully androgynous as well.



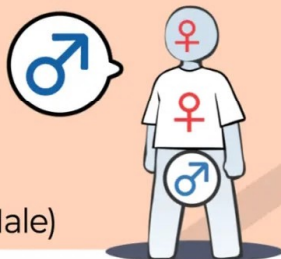
*While some of these words may apply to real people as well as fictional characters, depending on circumstances, I do not recommend using any of these terms to refer to actual people, living or dead.

*Please keep in mind that this chart is only a general guideline, and isn't guaranteed to achieve a correct result for each and every character.

Other terms that may lead to confusion

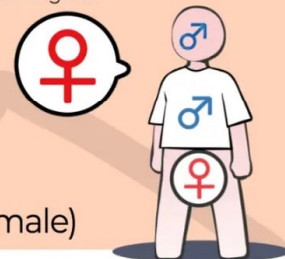
CROSSDRESSING

*Please note that many factors, including but not limited to one's gender identity or mere fashion sense, might render terms like "menswear" or "women's clothes" meaningless.



Crossdresser (Male)

A man dressing in clothes commonly perceived as feminine or "for women." They also tend to assume typically ladylike behaviors.



Crossdresser (Female)

A woman dressing in clothes commonly perceived as masculine or "for men." They also tend to assume typically manly behaviors.



Mannish

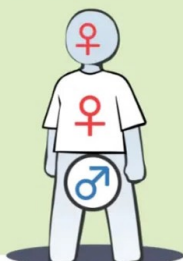
Women who adopt a style of dress typically associated with adult men. Their looks might include items like men's suits and underwear, as well as a wide variety of hairstyles.



Boyish

Girls who adopt a style of dress typically associated with young men, as well as youthful, masculine mannerisms. Boy's clothes, underwear, and short haircuts are some of the characteristics they tend to adopt.

WORK AND CULTURE



Newhalf

A Japanese term commonly used to refer to men who present as women in nightlife entertainment, the sex industry, or show business. Constructed by combining borrowed English words, the term was coined specifically to jump out easily and catch the reader's attention.



Drag Queen

Biological male performers who wear extravagant clothes and flamboyant make-up to act an exaggerated version of stereotypical female behavior. The etymology and origin of the term are subject to great debate.

FICTIONAL CONCEPTS

Yaoi Hole

Fictional concept unique to fiction featuring male homosexual sex. An opening found in the area between a man's anus and his testicles. Not strictly a genital organ, rather a hole existing for the purpose of sex, so the presence of a yaoi hole doesn't make the character a futanari, cuntboy, or similar term.

Gender Swap (男体化, 女体化)

Umbrella term referring to imaginary ways through which characters undergo complete sex changes. Usually, their minds remain the same, while their bodies are changed to be typical of the opposite sex. Works employing these scenarios are called "TSF," or "Transsexual Fiction," in Japan.

Feminization (メス男子)

Biological male characters who identify as men gain evident female characteristics through imaginary means and begin acting like stereotypical women as well. There is so much more to say on this topic, but our space is limited.

Tip Slip

While newhalf (ニューハーフ) has been used for a long time in Japan to describe all individuals who have undergone gender-affirming surgeries of any kind, the trend is in decline in recent years and transgender (トランスジェンダー) is gaining traction instead.

What kinds of futanari worlds exist?

The specific nature of any given instance of futanari depends on the world created for them by their author. In some works of fiction, futanari are born with male genitalia, while in other works futanari may acquire their male genitals at some point over the course of their lives for a variety of reasons. Many futanari only grow their extra genitals temporarily in a magical or scientific physical transformation.



Futanari are normal and occur naturally

Innate (Natural)

Futanari are born as futanari. Some worlds with innate futanari may have men, women, and futanari all living side by side, while others works have futanari and only either men or women. There are also worlds inhabited exclusively by futanari.

Artificial modifications can turn people into futanari



Acquired (Surgery)

People become futanari. In worlds like these, futanari with fully-functioning genitalia can be created with extremely advanced technology and surgery. The existence of such procedures is often hidden from the public.

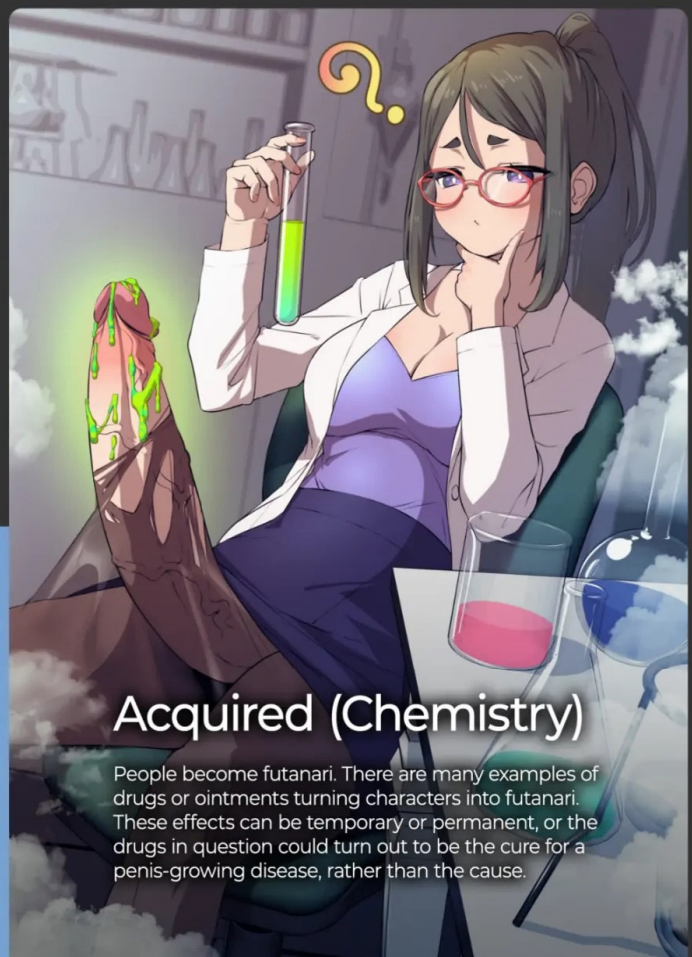


Mysterious powers can turn people into futanari

Acquired (Magic)

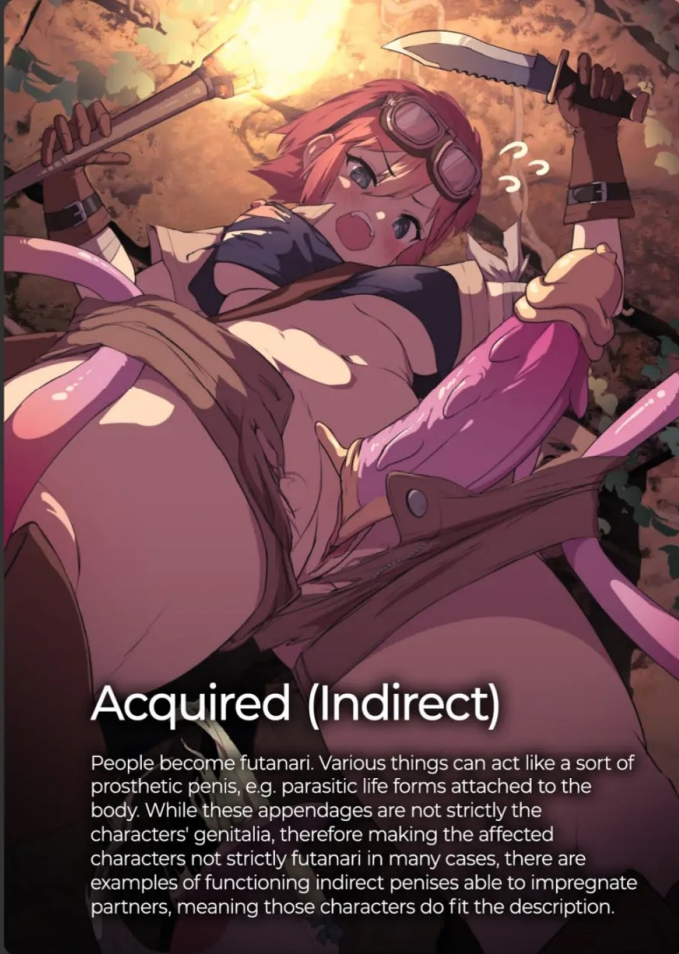
People become futanari. Some worlds feature magic, sorcery, hexes, miracles, devilry, and myriad varieties of supernatural powers. Many of these abilities can also be activated at a distance.

Mysterious drugs can turn people into futanari



Acquired (Chemistry)

People become futanari. There are many examples of drugs or ointments turning characters into futanari. These effects can be temporary or permanent, or the drugs in question could turn out to be the cure for a penis-growing disease, rather than the cause.

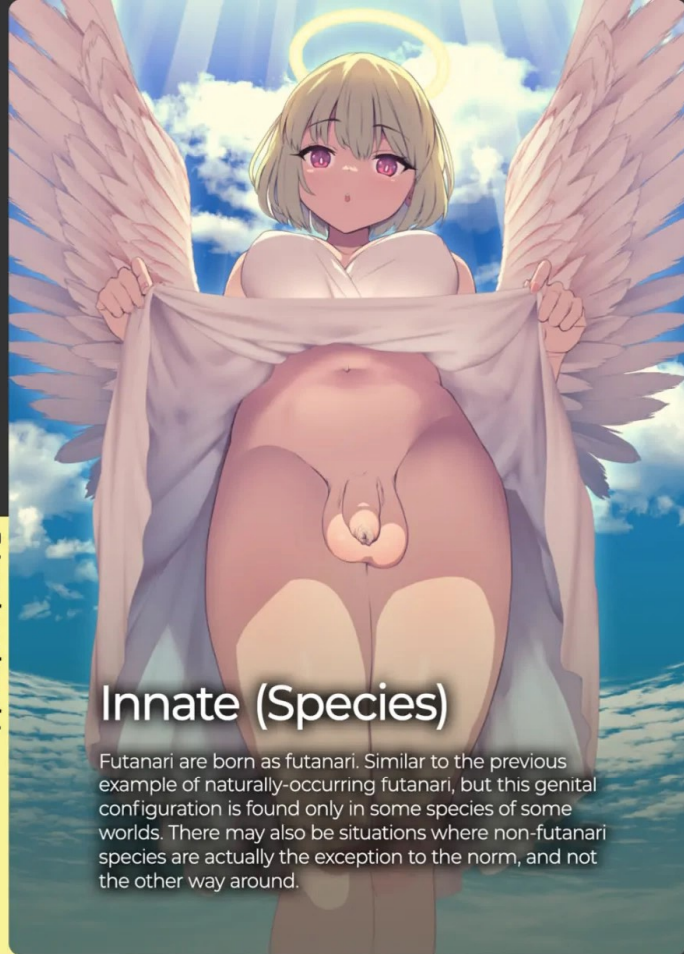


Something can indirectly make people futanari

Acquired (Indirect)

People become futanari. Various things can act like a sort of prosthetic penis, e.g. parasitic life forms attached to the body. While these appendages are not strictly the characters' genitalia, therefore making the affected characters not strictly futanari in many cases, there are examples of functioning indirect penises able to impregnate partners, meaning those characters do fit the description.

Futanari species exist



Innate (Species)

Futanari are born as futanari. Similar to the previous example of naturally-occurring futanari, but this genital configuration is found only in some species of some worlds. There may also be situations where non-futanari species are actually the exception to the norm, and not the other way around.

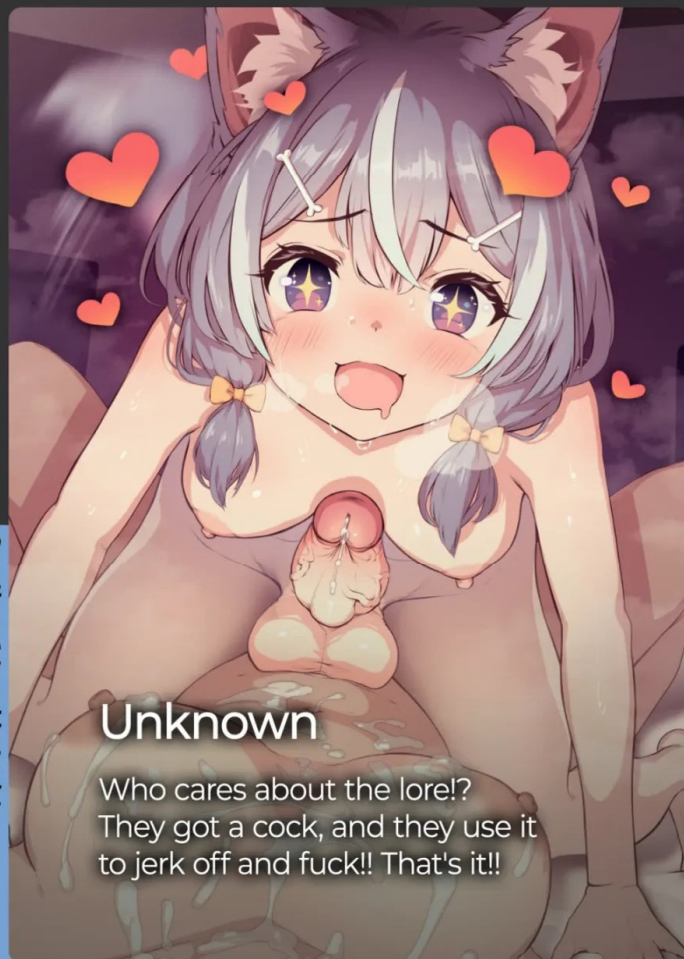


Body transformation can turn people into futanari

Transformation

While they may look like ordinary males or females at birth, these characters may start to show futanari characteristics and become a futanari as they grow up. There are also examples of characters becoming futanari due to disease.

Sometimes futanari just exist



Unknown

Who cares about the lore!? They got a cock, and they use it to jerk off and fuck!! That's it!!

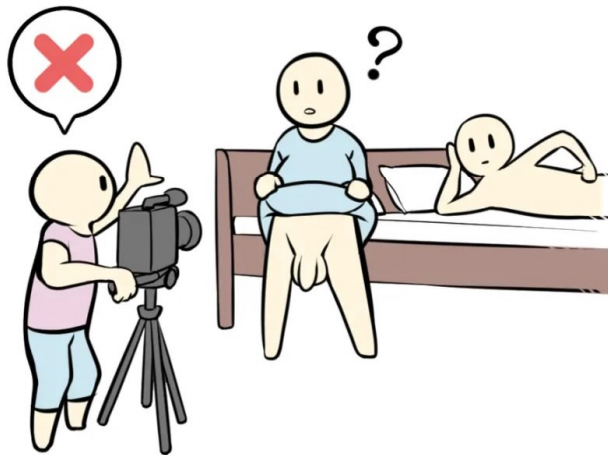
Some of these worlds may seem similar to each other, but each has its own spin on the concept which complements the stories they contain. It doesn't matter whether an author thinks hard about worldbuilding before starting to draw or if they simply wing it: Both approaches are perfectly valid. An author's imagination can give birth to many different futanari worlds.

Are futanari inextricable from porn?

Futanari outside of adult-only media

Considering all of the adult content featuring futanari, you might think futanari are for adults only... but you'd be wrong! There are plenty of characters who qualify as futanari outside of 18+ media. While futanari is the most commonly used word in pornographic contexts, terms like 両性具有 (*ryouseiguyuu*) and 半陰陽 (*han'in'you*) tend to be preferred in non-adult works. Still, as previously explained (p. 9,) futanari is also often used synonymously with those terms, too. Let me introduce to you some works featuring characters revealed to be canonically biologically androgynous.

**None of the portraits on these two pages are official artwork, it's all fanart; furthermore, no work represents scenes from their respective source works.*



Title

Interspecies Reviewers

Character

Crimvael

//Manga - Anime (Author: Amahara)

In a world where many different species live together, two adventurers, Stunk the human and Zel the elf, travel from place to place visiting brothels to have interspecies sex! They save the angel Crimvael one day. Crimvael entices them into becoming bodyguards and guides at the promise of a great reward. Stunk and Zel agree, and so the three all start adventuring together! It's an erotic comedy manga about visiting brothels and reviewing the interspecies sex the heroes have from the perspectives of many species!

-First Edition: 2017 (7 volumes, Ongoing)

-Anime Adaptation: 2020

#UniquePerspective #AllRacesAtPeace #AnimeAdaptation



Title

My Two Wings

Character

Makoto Kashiwagi

//Manga (Author: Toshiki Yui)

Makoto Kashiwagi and Hiromi Ishimari are cousins in the same year of high school. When Makoto moves in with Hiromi, Hiromi has trouble reconciling the person in front of her with her childhood memories. She clearly remembers having seen Makoto's penis! Hiromi had been looking forward to seeing the beautiful boy Makoto had grown into, but is utterly shocked when confronted with someone who looks just like a girl! It's a love comedy where the protagonist, Makoto, makes friends and forms relationships with many people at her new school!

-First Edition: 2003 (5 volumes, Concluded)

#TastefulCharacterStudy #SexualProblems #ComplicatedRelationships



Title

Metamorphoses

Character

Hermaphroditus

//Myth and legend

Hermaphroditus was a beautiful boy born of the union of Hermes and Aphrodite. The nymph Salmacis fell in love at first sight when she saw him swimming, but he turned her down. Madly enamored, she forcefully kissed him and begged the gods to let them be together forever. As a result of her prayer, the two became one in body and soul, and Hermaphroditus had both male and female genitalia henceforth. As you can already imagine, this is the etymology of the term *hermaphrodite*.

The portrait to the left is inspired by a figurine sold by SKYTUBE, which in turn is based on Ban!'s illustration titled "Hermaphroditus"

#GreekMyth #Folklore #OneShota



Title

Rosen Garten Saga

Character

Rin

//Manga (Writer: Sakimori Fuji - Artwork: Yousetsu Tonooka)

Rin's village is suddenly attacked one day. In the hopes of saving it, she wields the magic sword she finds in the woods to defeat the enemy with its power... But those slain by the blade become women!?! And then another, wholly different kind of sword appears between Rin's legs!! Embark on a grand adventure to find true strength with Rin and the spirit of the lecherous hero living in her sword!!

First Edition: 2021 (4 volumes, ongoing)

#BattleManga #SexyGags #CoolArt



Title

Bra Girl

Character

Haruka Ooi

//Manga (Author: Ryuta Amazume)

Haruka, a high school student, falls in love with the boy who rescued her from a train molester! But she's very worried, because she grew a penis when puberty hit. She's afraid her penis will create an impassable barrier between them... But one day, she meets other girls in the same situation. With friends who share her woes, she might just overcome her obstacles in this romance story!

First Edition: 2010 (1 volume, Concluded)

#Tactful #TastefulCharacterStudy #OneOnOneLove



Title

Sakura*Nadeshiko

Character

Nadeshiko Kiraboshi

//Manga (Author: Yui Haga)

Nadeshiko Kiraboshi and her childhood friend, Sakurako Mangetsu, have just enrolled in the academy once attended by Nadeshiko's idol role models, so Nadeshiko is already taking steps to shape the idol club's image... But on the very first night, a strange power makes her grow a penis, and her relationship with Sakurako is flipped on its head! Follow Nadeshiko's journey toward her dream of becoming an idol despite her unruly penis appearing whenever she gets too excited in this school comedy!

First Edition: 2016 (3 volumes, Concluded)

#CrazyGags #LoveyDovey #SchoolIdol

Title

MAZE the Megaburst Space

Character

Mill Varna

//LN - Manga - Anime (Author: Satory Akahori)

Maze wakes up in a mysterious forest and saves the life of one Princess Mill Varna, whom she swears doesn't recall knowing. But she can use magic now somehow, and she turns into a man at night!?

First Edition (LN): 1993 (9 volumes, Concluded)

Title

Please Let Me Bang You, Futaba!

Character

Naruse Futaba

//Manga (Author: Niku)

Unlucky white-collar worker Yoshida meets his first girlfriend, Futaba Naruse, right in the office. A great battle ensues as the two try to shrink the distance between them..!

First Edition: 2013 (3 volumes, Concluded)

Title

NieR Replicant

Character

Kainé

//Video Game (Developer: Cavia/Toylogic)

The protagonist sets out to find a cure for his daughter's illness. During his journey, he's suddenly attacked by the mysterious Kainé outside of a village.

First Release: 2010
Remaster: 2021

Title

Boku no Ryousei Guyuu Syndrome

Character

You Yukino

//Manga (Author: Niku)

You Yukino is a high school student deeply worried about being intersex. You's classmate, Ichinomiya, harbors suspicions about You's condition. One day Ichinomiya undresses You to confirm his suspicions, and...

First Edition: 2010 (1 volume, Concluded)

Title

Guilty Gear (Series)

Character

Testament

//Video Game (Developer: Arc-System Works)

A sprawling story about the battles between artificial beings called Gears. Testament was originally born with a male body, but after having been transformed into a Gear, they now have androgynous features.

Series Debut: 1998
Latest Title: 2021

Title

Hybrid Girlfriend

Character

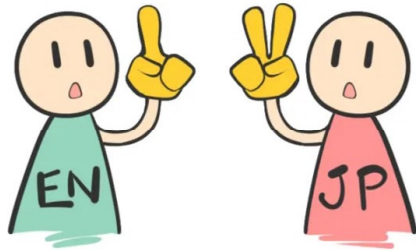
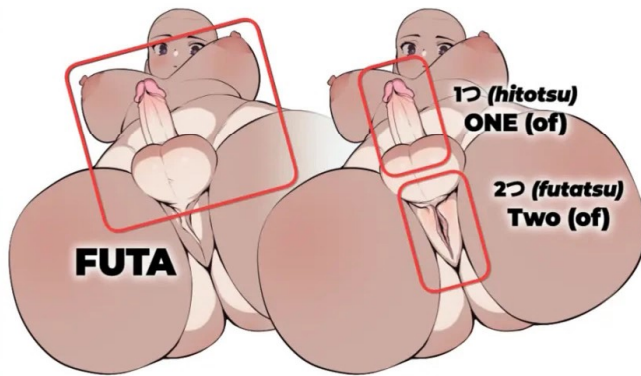
Shiori Ayane

//Manga (Author: Marneko)

An illness turns high school student Masato from a boy into girl, and Masato's female childhood friend, Shiori, from standard girl to intersex, throwing their lives and relationship into utter chaos!

First Edition: 2017 (2 volumes, Concluded)

What about the word *futanari*?



Do people say Futa/Futanari outside of Japan?

While futanari are definitely a known concept, people in the English-speaking world tell me this knowledge is not widespread; its usage is instead limited to those who are familiar with adult manga and artwork from Japan. There aren't any real statistics on this matter though, so I can't provide any definite numbers.

There was never a rule saying the word futanari could only be used in Japan though, of course; so while English has classic terms like hermaphrodite, androgyny, and intersex, there are many cases where Futa/Futanari is used in the context of adult comics, animations, illustrations, and 3D artwork instead of those English words.

But the term's definition has grown somewhat fuzzier as it's left Japan's borders: When found in foreign contexts, it has often lost its core original meaning of having both sets of genitalia. While there certainly are examples of fictional girls who only have male genitalia being called "Dickgirls" like we'd do here in Japan, the term Futa/Futanari vastly dominates the nomenclature, even in those cases.

What's the right way to correct misuse of the term?

Japanese people are very familiar with the concept of *wasei-eigo* (Japanese-made English,) words with English roots but coined and used almost exclusively in Japan. *Wasei-eigo* is a great example of widely accepted, not-quite-accurate words becoming difficult to eradicate once everyone starts using them. For example, say コンセント (*consento*) to a group of Japanese people, and most will immediately think of an electrical outlet. And yet it sounds exactly like the English word "consent!" But good luck convincing an entire country to switch to a better word.

Besides, we can find more than a few examples of misuse of terms in adult media even within Japan's borders. Some try to use more exotic-sounding words than futanari and may switch them out for something else, probably unaware of the exact connotations. Dickgirl is used appropriately on many occasions, but its meaning is not as widely known as futanari's in Japan, so it sometimes ends up misused.

While understanding the correct meaning of words is important, avoiding correcting too aggressively those who call characters with only one set of genitalia Futa/Futanari is just as important. Ridiculing someone for a mistake like that is simply absurd.



A new way of thinking of categories

In recent times, it's become popular to append Full Package to futanari works to stress the author's adherence to the original meaning of the word and clear all doubts about the kind of futanari the work deals with. You'll often find the label "Full-package Futanari" or "Futanari (Full Package)" as well as other variations with or without parentheses.

And to that I say, more power to the audience! I think that giving everyone more tools to look up and find exactly what they like is a good thing, even if it results in brand new words.



Tip Slip

The Japanese misuse of コンセント (*consento*) apparently stems from the foreign electrical plugs imported in the Meiji Period, which were called "concentric plugs." This was then abbreviated "consent," which ultimately stuck.

What's the correct way to write the word in Japanese?

There are three types of writing in Japanese: hiragana, katakana, and kanji. Futanari can be written in all three (ふたなり, フタナリ, 二形/双形/etc respectively), so there is no definitive answer to this question, and it all comes down to context and preference. Some Japanese words have conventions that dictate which one to use depending on the context, like apple (*ringo*). Such conventions don't exist with futanari.

As for myself, I personally consider futanari (ふたなり) to be softer and nicer-sounding when written in hiragana, so that's my preferred way to write it. As you can see, there are as many ways to think about writing this word as there are people, which is a good thing in my opinion. There aren't many contemporary works that write futanari in kanji (i.e. 二形) but there might be places where it's more appropriate than hiragana, like in period pieces, for example.



Gender Symbols

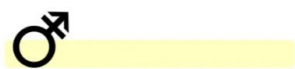
By combining the ♂ and ♀ special symbols, we can find yet another way to describe androgynous characters. You can even use their Unicode numbers to write them out!



Unicode: U+26A4
Bisexual



Unicode: U+26A6
Transgender
Hermaphroditism
(Entomology)



Unicode: U+26A6
Transgender
Iron (Alchemy)



Unicode: U+263F
Mercury (Planet)
Quicksilver (Alchemy)



Unicode: U+26A7
Transgender



Unicode: U+26A8
Iron (Alchemy)



Unicode: U+26A9
Iron (Alchemy)



♁ is the symbol used for Mercury in astrology. While the appearance of the symbol itself has nothing to do with fusing ♂ and ♀ or with genders at all per se, it still came to denote androgyny/intersex because the planet Mercury possess both male and female sexual energy in astrology.

Tip Slip

When a Japanese person hears the word futa on its own, the first thing they'll think about is probably 蓋 (*futa*, lid or cap.) so the only people likely to immediately make a connection to futanari are those already intimately familiar with futanari fiction.

The many Japanese terms for male genitalia

There are many words used to refer to male genitalia in Japanese. Terms traditionally considered childish deserve a special mention because they are quite commonly used by Japanese adults. These childish turns of phrase are combined with euphemistic expressions to help maintain a less vulgar tone, even when talking about sex and genitals. While these words don't pertain exclusively to futanari, they're still intrinsic to the very nature of futanari and are inseparable from them, so I thought it appropriate to introduce some definitions for the reader.

The list below isn't so hubristic as to consider itself comprehensive. For example, it doesn't include regional variants, of which there are many. Furthermore, please keep in mind that **the included explanations are entirely subjective to the author** and should be treated informally.



MEDICAL

Danseiki (男性器)

The general term for the male genital organs.

Inkei (陰茎)

The organ through which sperm travels to leave the body in males.



SHAPE-RELATED

Bou (棒 - rod, stick)

An expression that invokes something long and straight in shape.

Inbou (淫棒 - dirty rod)

Same as *bou*, with a prefix that implies a dirty/sexual context.

Penisu (ペニス)

Borrowed from the English "penis."

Kougan (睾丸)

Male gonads. The glands which produce sperm, equivalent to the more strictly anatomical *seisou* (精巣). The sack containing them is called *in'ou* (陰嚢).

Nikubou (肉棒 - meat rod)

Same as *bou*, but made of flesh.

Chinbou (ちん棒)

An expression that combines *bou* with a childish term for penis.



CHILDISH LANGUAGE

Chinchin (ちんちん)

An expression used extensively by children and adults alike. It wouldn't be an exaggeration to say it's the most popular euphemism for penis in all of Japan.

Ochinchin (おちんちん)

Chinchin, but with the polite prefix *o-* also called "beautification." Often used by adults of all genders when talking to children or by women in everyday speech, it's been gaining traction in other contexts as well.

Chinko (ちんこ)

Widely used by all ages like *chinchin*, but carries a slightly more vulgar connotation. It tends to be employed by a narrower age bracket that excludes the youngest.

Ochinko (おちんこ)

Chinko, but rendered more polite with the beautifying *o-* prefix. Since it comes from a word that's slightly more vulgar than *chinchin*, it still remains more rarely appropriate despite the prefix.

Chinpo (ちんぽ)

The most popular among the vulgar, sexual ways of saying "penis." Very few young children use it, decidedly pushing the age bracket for the term upward.

Ochinpo (おちんぽ)

An expression that purposefully attaches a polite particle to a highly vulgar term, resulting in a juxtaposition that can imply depravity, respect/awe, and more. Mostly encountered in sexual contexts.

Chinpoko (ちんぽこ)

Widely used by people of all ages, from children to adults, this word is considered more vulgar than *chinchin*, hence more difficult to use.

Pokochin (ぽこちん)

Inversion of *Chinpoko*, obtained by swapping the first half of the word with the second.

Timpo (ティムポ)

Obtained by slurring *Chinpo*. Almost exclusively found in writing.



SIMILES - OTHERS

Sao (竿 - rod, pole)

Used to describe any item that is long and cylindrical in shape.

Ichimotsu (イチモツ - thing)

Spelling in katakana of the word 一物, which means "thing" or "one thing". This term can possess many meanings, but is often used for male genitalia.

Kinoko (キノコ - mushroom)

Used because of the resemblance between penises and mushrooms. And in the case of the *hypomyces hyalinus*, the resemblance really is uncanny.

Dankon (男根 - male root)

An old-fashioned expression for "penis."

Mara (マラ)

Derived from the name of the demon (魔羅, Mara) who tempted the Buddha. Mara represents worldly desires.

Musuko (息子 - son)

Originated from the word parents use to refer to their male children, *segare* (せがれ) is also employed equivalently. Analogous to the English "little/big brother" of similar usage.

Asoko (あそこ - there)

An expression normally used to spatially denote a place/spot to the listener, one generally far away from both parties. Highly context-dependent, this word can be accompanied by a pointing finger if the place or object is relatively close by.

Souseiji (ソーセージ - sausage)

Used due to the resemblance between penises and sausages. Sometimes replaced by Pork Bits (ポークビッツ, Trade Mark) to refer to small penises, or by Frankfurter (フランクフルト) in case of a big one.

Zousan (ぞうさん)

Expression comprised of the word for elephant, *zou* (象) with the *-san* honorific attached. Rarely used without the honorific.

TESTICLES

Tama (玉)

Just like "balls" and equivalent in meaning, a term evoking a round shape. The scrotum that contains these balls also has an equivalent to "ballsack" in tamabukuro (玉袋 - ball sack)

Kintama (金玉)

The most commonly used among colloquial terms for scrotum. It may be the most popular term in the country, but the etymology for the kin part (金 - gold/money, metal) is debated.

Fuguri (ふぐり)

Derived from a corrupted/mispronounced version of matsubokkuri (松ぼっくり, pinecone) it's used because of the resemblance testicles share with pinecones.

Tamakin (たまきん)

Inversion of Kintama, obtained by swapping the first half of the word with the second.

Kyantama (きやんたま)

Euphemistic expression for *Kintama*.

Tamatama (たまたま)

Childish expression. While this word shares its pronunciation with the Tamatama Pokémon (Eggscute in English) the name of the fictional creature is likely derived from tamago (卵 - egg), a completely different *tama*.

Futanari-related tags



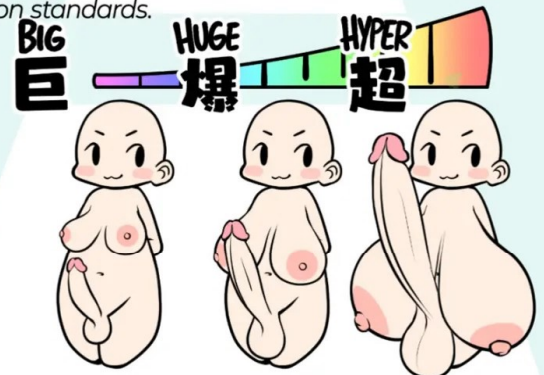
Let's look at a few examples of Japanese tags used on websites that collect illustrations, manga, and videos featuring futanari, as well as their English counterparts.

日本語	ENGLISH
ふた×男 (ふたなり×男)	futa on male (futanari on male)
ふた×女 (ふたなり×女)	futa on female (futanari on female)
ふた×ふた (ふたなり×ふたなり)	futa on futa (futanari on futanari)
巨根	big cock (big dick)
爆根	huge cock (huge dick)
超根	hyper cock (hyper dick)
セルフフェラ	self blowjob
セルフパイズリ	self titfuck

*Big, huge, and hyper are entirely subjective indications of size in both languages and have no agreed upon standards.

There are many more futanari-related tags in Japanese, as well as tags that collate two other tags (like ふたゆり, *futayuri*, which denotes both futa-on-female and futa-on-futa content). Furthermore, given the overwhelming predominance of otherwise female-bodied futanari, there's also a tag to specifically find male-bodied futanari, 男ふたなり (*otokofutanari*), as well as one used to describe individuals with two penises or more, 複根 (*fukukon*), which means double root. These are only a few of the numerous tags used across social media and the like.

There may be even more tags on the websites you browse, maybe even some I haven't heard of!



Tip Slip

In Japanese, the kanji used in big cock (巨, *kyo*) simply means something is very large, while the one used in hyper cock (超, *chou*) usually denotes something that's way outside normalcy. However, the kanji used in huge cock (爆, *baku*) means explosion/burst and has no inherent connotation of size; many theories about the etymology exist, but its origins are shrouded in mystery.

What kind of people enjoy futanari?

Do men like futanari?

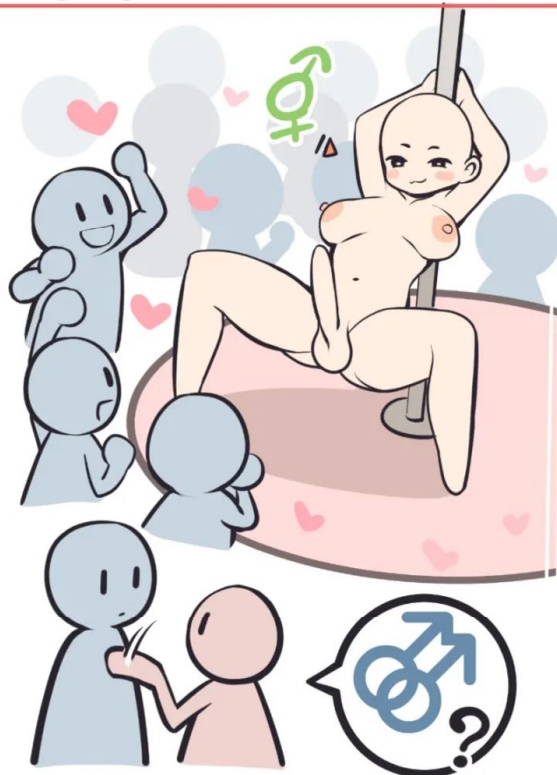
Futanari, by definition, have male genitalia. But as we've already discussed on the page about the gender of futanari, the lack or presence of a penis may not be enough to determine someone's gender in the fictional worlds where futanari can be found.

For that reason, liking futanari does not necessarily mean liking men, and conflating a given man's attitude toward futanari (like, dislike, no preference) with his sexual orientation* may easily lead to misunderstandings.

The same goes for other potentially-related concepts where the lines may be even blurrier. If someone likes futanari, it doesn't necessarily mean they also like characters we've previously defined as shemales or otoko no ko (male) on page 10. In general, it would probably be a good idea to stop making sweeping statements like "if someone likes X, they'll *definitely* like Y as well."

Lastly, making mistakes is absolutely normal, it happens to everyone! In case you find yourself on the receiving end of a misunderstanding, try not to lash out at the person with the erroneous assumptions; you should instead make an effort to calmly explain your particular stance instead.

**Sexual orientation: where one's romantic or sexual attractions lie. Examples: heterosexual, homosexual, etc.*



This is why I got into futanari!

Ask a hundred people why they like futanari, and they'll give you a hundred different answers. When I made a poll on social media asking people why they were so passionate about futanari, I received so many different answers!





A penis allows girls to have sex with each other!



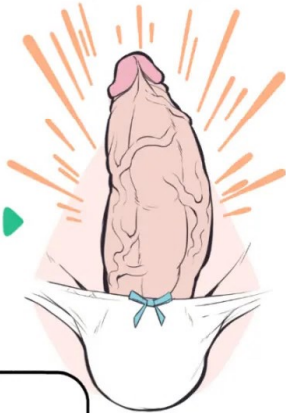
I want to see them go crazy with male libido!



As a man, this is easier to relate to!



The contrast is so *moe*!



Now the girls I ship can have a baby!

And I believe there are many more on top of these. There are truly countless reasons to love futanari.

So, what are futanari like?

Let's now specifically talk about futanari in adult media, and some ideas and tropes surrounding them. I'd like to make something clear first though: **Your own unique perspective matters, and the worlds your perspective paints are yours to keep and shape as you please.**

Don't let discussions grounded in real-world premises clip your creative wings or weigh you down.



Do futanari have a strong libido?

Libido varies from character to character just like it does between real people, so a high libido isn't necessarily a given for futanari; but at the same time, there are worlds where the answer to this question is a firm yes. It's a good premise for making naughty stuff happen, isn't it? Growing a penis can give a female character new desires unique to the experience of male genitalia, like wanting to stroke it, or to put it inside someone or something to feel good. And what if a character was already physically attracted to someone, and would've liked a penis to use with their special someone in the first place? That would surely fire a character up quite nicely!

Anything goes, really: You can have a world based on the very specific premise that **futanari experience both desire to penetrate and to be penetrated at the same time, so their desire is doubled**; in another world, the entire story might be built around an unrealistic concept, like that **futanari experience no refractory period because their vaginal orgasms cancel that out, allowing them to experience pleasure even after an ejaculation!** While it's true that every single futanari character won't have an increased libido, extreme libido is definitely one of the core elements of the entire concept of futanari, as well as one of its greatest charms.

Who knows, maybe someone out there has already created a world where futanari have such troublingly high libidos that they can experience pleasure and ejaculate at the slightest breeze if they walk around in a skirt without underwear!

Is a futanari penis more powerful than a man's?

While the exact specifics of what "more powerful" actually implies changes from person to person; for the sake of simplicity, let's focus on the issue of size. For example, let's look at penis length/girth, or the amount of semen ejaculated. As with our conclusions about sex drive on the previous page, it isn't necessarily true that futanari have extra strong dicks, but powerful dicks can be powerful tools to create sexy moments. In settings where women can grow a penis, it's not uncommon to find authors who choose to give their futanari longer shafts or more abundant ejaculate compared to men in order to create concrete differences between genitalia that would otherwise be very similar.

For example, let's consider the emotional power imbalance this difference can create between characters. In worlds where futanari are uncommon (or, at least, aren't common knowledge), the penis is often seen as a symbol of masculinity and a reason for pride; a man from such a setting who encounters a woman with a penis "more powerful" than his may see his pride crumble before his eyes. A sexual relationship built around the power imbalance or reversal between such characters can be quite arousing. This is but one of many possible settings that can be created around this simple concept.

But that's not all: The same comparative difference may drastically affect a woman who discovers she suddenly has a massive penis. She may develop a complex about it, which can develop into deep shame or even turn into joy and acceptance, entirely depending on the direction of the story!



What about menstruation?

Menstruation (also known as "periods") is a cyclic physiological phenomenon that repeats about every four weeks; it involves ovulation and, in cases where pregnancy hasn't occurred within about two weeks of ovulation, the shedding of the lining of the uterus. A futanari with a uterus may menstruate.

However, ignoring entirely the existence of menstruation is also entirely viable in fiction, especially if the work in question revolves around sexual situations. And there's no harm in avoiding depiction or mention of menstruation even when the futanari character doesn't get into any sexual situations whatsoever! At the same time, we must keep in mind that menstruation is an important part of the lives of women, and it may be an interesting aspect to explore in a futanari character if that's the story you're trying to tell.

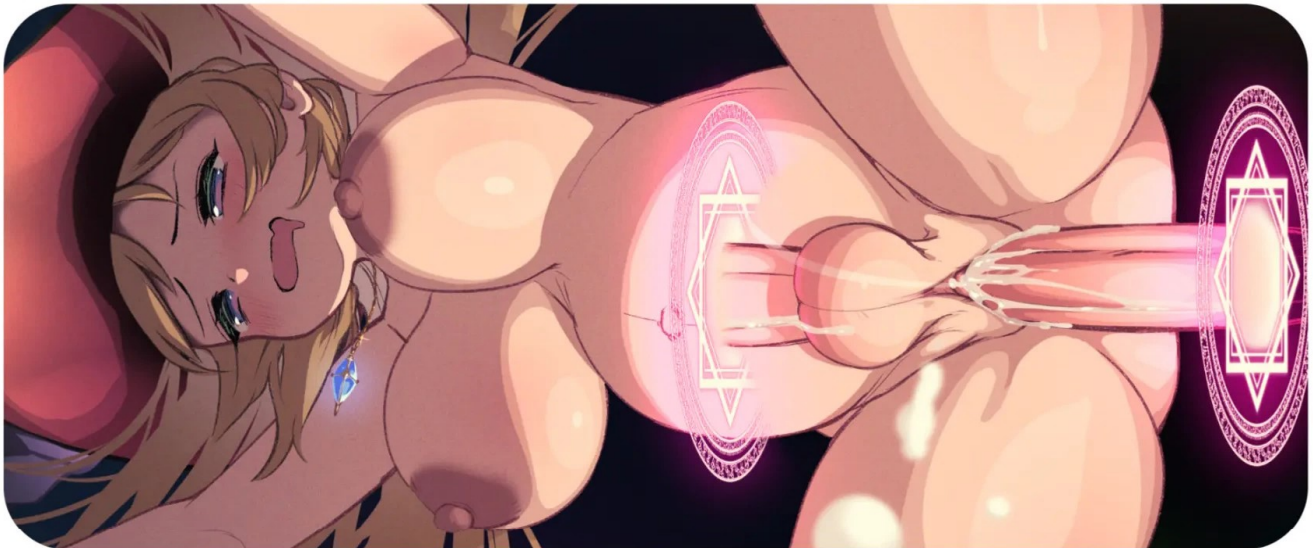
Lastly, let me reiterate once more that futanari as a whole are an entirely fictional concept, so menstruation could take on unique shapes, very different from what we're familiar with in reality depending on the world the characters inhabit. For example, one could envision a world in which some futanari do not have periods despite displaying otherwise typically female characteristics, and only begin menstruating after experiencing vaginal penetration for the first time. Perhaps in other worlds, futanari could have periods, but the shedding of the uterine lining might result in increased semen production instead of blood loss, directly resulting in increased desire to ejaculate. Futanari might even experience spontaneous ejaculations during that time of the month.

What about pregnancy?

Since futanari have functioning male and female reproductive organs, they are able to have children with men, women, and other futanari. Furthermore, in futa x woman and futa x futa couples, both partners can get pregnant. When you think about this from a real world perspective, a double pregnancy like that would be very hard on the couple without social and financial support, but one of the advantages of fiction is the ability to create stories where real world problems don't affect characters as they would us.

Futanari pregnancies don't have to be strictly natural either! As explained in the section on the many worlds where futanari characters are possible, pregnancy could be the result of magic or parasitic creatures, just like futanari genitalia itself. In the case of parasitism, the impregnating seed might actually come from the parasite, not the human it's attached to, resulting in the birth of the creature's spawn; so while there are many instances of futanari pregnancies, it's important to think about the differences between them.

In worlds where magic exists, it could be possible to create a portal allowing a futanari to put her own penis inside her vagina, resulting in self-pregnancy. While parthenogenesis (asexual reproduction) isn't normally possible for humans, futanari and their bodies belong to the realm of fiction. Giving them the ability to reproduce without the need for a partner is entirely possible.



Which one do they use to urinate?

Both male and female genitals have urethras, but what about futanari genitals? Well, since futanari have both, it might be entirely possible for them to have two urethras as well. There's no clear divide here: some fully imagine the arrangement of organs inside futanari bodies to decide how their physiology works, while others will make the decision entirely depending on what story they want to tell.

Some authors might want to draw futanari peeing while standing, sending urine flying much farther than a sitting pee; others might want futanari to urinate from their female parts instead, forcing their futanari characters to lift their scrotums if they don't want to pee on their balls. It doesn't have to be either or, of course! Maybe pee comes out of both urethras, making it impossible for futanari in certain worlds to pee while standing. Furthermore, just like how different muscles allow us to have a degree of control over whether and when we urinate or defecate in the real world, there may exist worlds where futanari can similarly choose where their pee comes out.



Tip Slip

24

While bladder sizes are similar between real world men and women, women have a shorter urethra and weaker muscles surrounding it, often forcing them to urinate more frequently compared to men. This phenomenon is further exacerbated during pregnancy, when the uterus is enlarged by the baby inside it, exerting direct pressure on the bladder.

Do futanari have amazing orgasms?

There are many differences in the experience of orgasm between men and women. Men reach the peak of pleasure during ejaculation, and shift to a feeling of calm and emptiness once their ejaculation is complete; the female orgasm, on the other hand, can consist of large, distinct waves of pleasure that can peak several times in succession. Depending on the person, these peaks and waves can take quite some time to wind down.

Futanari bodies can theoretically express characteristics of both male and female orgasms. How would those forces interact with one another? For example, imagine a futanari reaching a female orgasm immediately after ejaculating, right as the mood downturn from her ejaculatory orgasm is about to hit. What would happen to that mood swing? Would it disappear? Conversely, if we switch the order of their occurrence, how would the pleasure of ejaculation affect the female orgasm?

Whatever you envision the true nature of futanari orgasm to be, it's certainly a type of pleasure that only they could possibly experience.

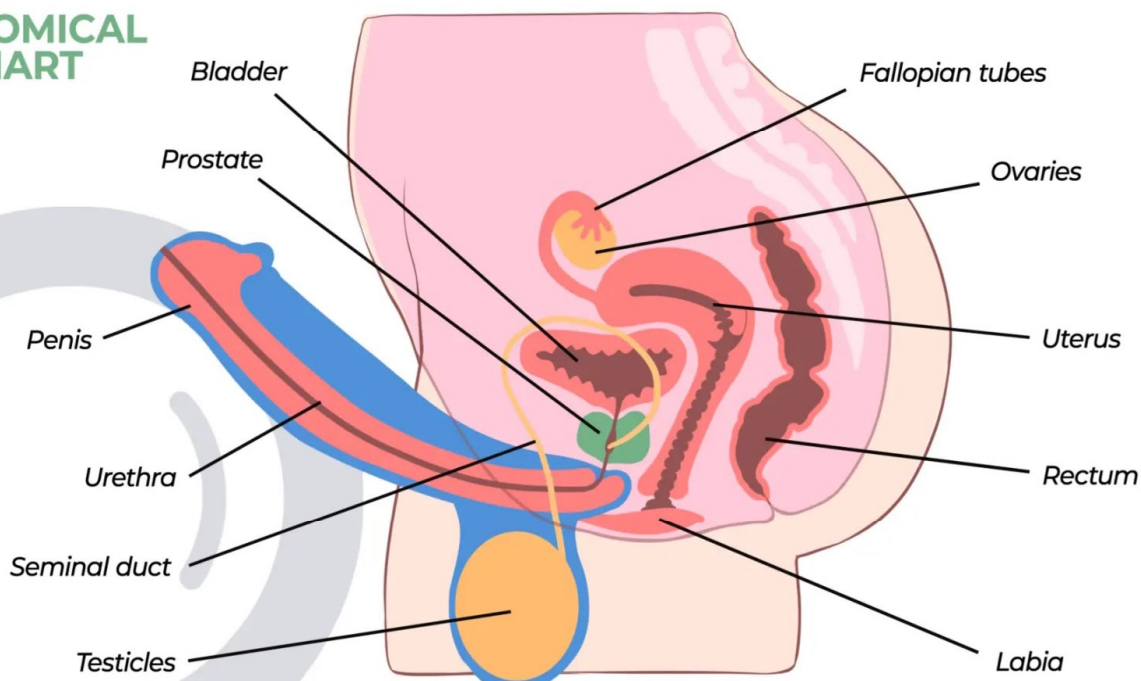


What's the anatomy of futanari?

The anatomy of a futanari depends entirely on the particular world they live in. The very existence of specific body parts (like the prostate or ovaries) can change from one work to the next. For example, picture a world where futanari don't have scrotums: Do they not have testicles at all? Do their testicles rest somewhere else in their bodies? Or do they have some other semen-producing organ, rather than testicles at all? There are many possibilities.

One more. What happens to what's commonly known as "the G-spot," an area that allows for clitoral stimulation from within the vagina? Again, multiple approaches are possible; for example, instead of feeling it in the clitoris like usual, a futanari could experience pleasure specifically in her penis when her G-spot is stimulated, even if she actually has a clitoris, too.

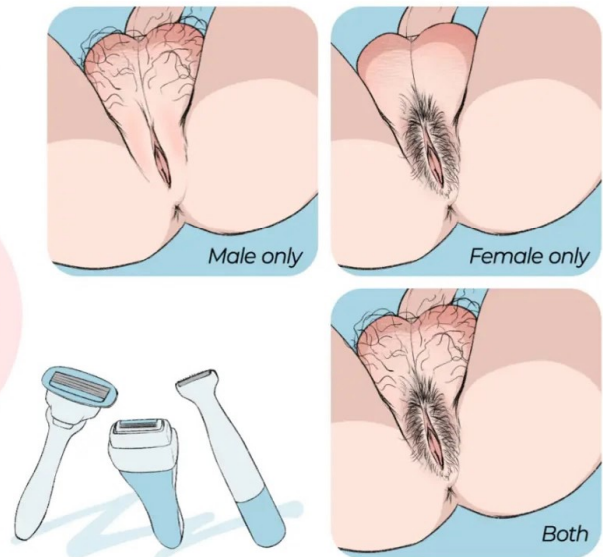
ANATOMICAL CHART



What about pubic hair?

Body hair grows thicker in areas where blood and lymphatic vessels are abundant and the skin is relatively thin. Its function is to block external stimuli, germs, and other things. Considering its role and the innate delicateness of both male and female genitalia, it's only natural for hair to grow on all kinds of genitals, even in futanari.

In reality the amount of pubic hair varies from person to person and it can be shaved and groomed in any number of ways, but different fictional worlds can have very different rules about pubic hair growth patterns. Some futanari only grow hair on their male genitalia, others only around the female genitalia, and some futanari surely exist that grow no pubic hair at all.



What of those risks inherent to having male genitalia?

Being struck in the crotch area is extremely painful for both men and women, but men are especially prone to this agony because the scrotum is a sensitive external organ that also increases the size of the potential strike area. Even a stray ball lightly bouncing off the ground and into the scrotum can be painful. Therefore futanari, who otherwise share many female sexual characteristics, are also open to this risk if they have a scrotum.

Furthermore, assuming futanari wear women's underwear and swimsuits (which are decidedly smaller than their masculine counterparts) they may incur challenges keeping their male genitalia properly concealed; this struggle can be somewhat alleviated through methods used in the real world, like tucking the penis toward the backside between the legs rather than letting it hang in the front, and some products and techniques that could help conceal their packages in a similar fashion as well (you can look these up yourself by searching keywords like "taping" and the like).

Female-bodied futanari may also be mistaken for men in worlds where futanari aren't a naturally-occurring; however, if they don't have scrotums, this misunderstanding is quickly cleared the moment the futanari gets naked.



Luckily, situations causing violent trauma to genitalia are few and far between for both men and women.

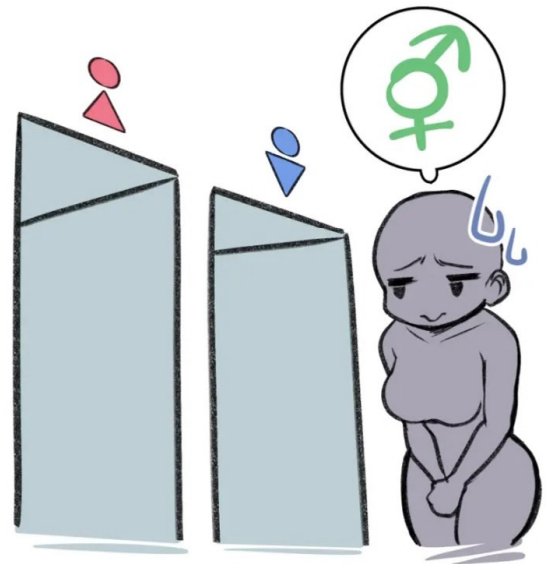
Tip Slip

The penis itself isn't very hairy on average, only growing a little hair near the base. Hair follicles are also spaced apart on the scrotum, making skin visible under the hair. In women, hair can grow so thick on the labia majora that it can even conceal the skin entirely.

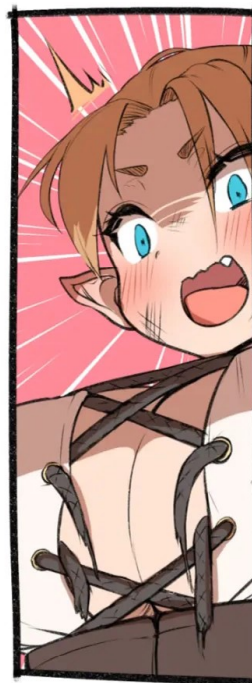
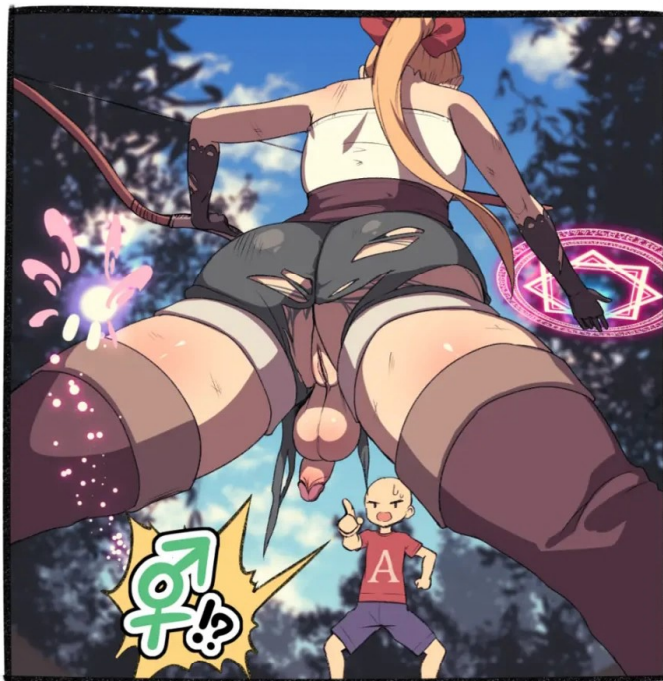
What genders exist in worlds with futanari?

In short, the answer entirely depends on the type of world. You can have male-bodied and female-bodied futanari together with standard men and women; you can have either or, so only male-bodied or female-bodied futanari existing alongside men and women; and there are even worlds where only futanari exist.

In such cases, a binary distinction between male and female often doesn't make sense to the world's characters, and a different type of classification may take its place instead. Futanari individuals might be considered to be both genders; or they may have a specific definition that revolves around their body type, like "female-bodied"; they may be lumped together with a traditional gender in a binary system and simply be called women; and, of course, there may also be no distinctions at all, resulting in a world with no strict concept of gender whatsoever. Genders (or lack thereof) are entirely dependent on the worlds being created, and countless configurations are possible.



Do futanari works have to use the word itself?



There are certain tropes some of you are surely familiar with. "Yes, I'm a futanari!" or "I love futa cock, it feels incredible!♥" are the kinds of lines used to exemplify the nature of characters with both male and female genitalia. Employing the word futanari in a work implies that the existence of such individuals is known and acknowledged at least at some level in that work's particular world.

Conversely, it's unnecessary to make strong distinctions about who's a futanari and who isn't in certain kinds of worlds, for example those where all women are futanari. In short, the decision to use the word futanari or to not use it can itself tell the reader something about the world, and whether or not futanari commonly exist within it.

And yet, even if an author's worldbuilding makes actual use of the word futanari superfluous, the fact is, no matter how commonplace they are in a fictional world, futanari remain radically distant from our reality. This means possible reader confusion. If you'd rather increase accessibility and ease of comprehension in your work, feel free to use the word futanari even in worlds where such characters are the norm; doing so could actually work in your favor if the story in question fully revolves around futanari. So feel free to use futanari, androgynous, ryouseiguuyuu, or any other term if you want to; term use is entirely up to the discretion of the author.

Balls or no balls? Which is better?

There are, of course, two broad types of futanari: those with scrotums, and those without. I'm sure some of you are already rolling your eyes at the heading, but rest assured, I'm not here to validate either side and tell you your tastes are wrong. I'm not going to rank them!

Still, these are two very different approaches, each with unique strengths and charms. Some items on the following lists may not apply to you, of course. Your mileage may vary depending on what you value most about futanari; but it's key to understand there's no absolute winner, only pros and cons to either choice.



With balls



PROS

The balls can be used.

Any sexual activity involving balls becomes available (i.e. fondling) and accessorizing is also possible, like a balls bra (see p.30).

The ball size adds individuality

Things like extreme droopiness or a very large scrotum contrasting a small penis can add to a character's unique traits.

CONS

It's harder to show they are actually futanari

Since the scrotum can easily cover female genitalia, it can be harder for the reader to tell whether a character is futanari or not, even when she's naked. (Conversely, this could be used to your advantage to hide female genitalia for as long as possible).

Without balls

PROS

Easy to tell the character is futanari

Female genitalia are easier to show with no scrotum in the way. The nature of the character becomes evident the moment they're naked.

It removes all testicle-related risks

Compared to the other approach, there's less risk of physical trauma, less potential stuffiness, and small swimsuits can be worn more easily.

CONS

Can't use the balls at all

None of the example activities in the other chart can be performed without a scrotum. (If those things don't interest you in the first place, this point becomes nearly irrelevant.)



In short, the biggest difference between futanari with balls or not is that **the former type has access to activities and items involving the scrotum**, while **the latter enjoys increased visibility of the female genitalia**. This is of course only a cursory glance at the matter, a mere example, and I'm sure there are many more hidden charms to both approaches.

Are Omegaverse characters futanari?

Let me first explain the gist of the Omegaverse for those hearing about it for the first time. Whether in the original iteration or derivative spins off of it, Omegaverse worlds feature androgynous characters whose interactions are shaped by a social class system inspired by social structure in wolf packs. **Alpha**, **Beta**, and **Omega** are three distinct genetic phenotypes layered on top of men and women as we know them, resulting in six genders or types in total. **Alphas are the elite, physically strong and highly intelligent; they possess male genitalia regardless of whether they're men or women. Betas are the middle class, and they don't differ much from humans from the real world. Omegas are the bottom class; they have difficulty controlling their arousal, and they can become pregnant regardless of whether they're men or women.** Considering the above, **Alpha** women and **Omega** men are androgynous characters, meaning they do fit the description and can be considered futanari.

When considering the Omegaverse as a basic concept on which to build something else, such a world wouldn't need to feature futanari as a necessity, but Omegaverse worlds can be one of many creative outlets in which to place futanari characters. We regrettably don't have the time or space to go over the more subtle intricacies of the Omegaverse, so if you're intrigued, make sure you check it out for yourself.



Miscellaneous penis-related ideas

I'll now talk about a few things that generally relate to male genitalia, and which don't strictly pertain to futanari alone. Still, some of these tropes are featured in futanari works, and who knows, they might even give you some new ideas of your own.

What about non-human penises?

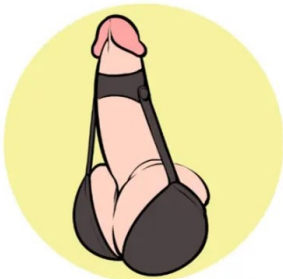
When creating beastmen characters, like for example a humanoid based on a horse, some authors decide to model the character's penis after horse genitalia. This isn't, of course, a black and white decision, but exists on more of a scale; the exact degree to which a penis is animal-like or human-like depends entirely on the world in question. And the sky is truly the limit when it comes to hybridizing humans with fictional creatures like dragons, so you can get as creative as you want with the design of such a character's penis.

There are even cases of humans, not beastmen, having animal-like penises.



Ball bras...? Cock socks?

These are some accessories for male genitalia, and they aren't limited to futanari. Please note that some of the names listed for these objects are used inconsistently, and that, while most of these items are fictional, some do actually exist.



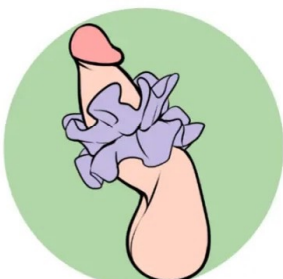
Balls Bra

A bra-shaped accessory that holds the scrotum like a bra holds breasts. Some balls bras are attached to the base of the penis, while others are strapped near the glans and lift the scrotum when the penis becomes erect. (In the latter case, lifting the scrotum might make a futanari's female genitalia more visible.)



Cock Sock

There are several varieties of accessories to cover the penis. As the name suggests, this particular one is designed to look like a sock. Cock socks are useless for sex. Instead, they're just worn as a fashion choice or to protect the penis against the cold. Such a garment is most suitable for those who are so well-endowed their penis pokes out of their clothes.



Dick Scrunchie

An elastic fabric accessory designed to look like a bracelet or hair scrunchie, but worn around the penis. There are other types modeled after clothes normally worn on the torso, like dick corsets and dick shirts. Once again, these are more fashion choices than utilitarian ones.

Life with hyper-sized male genitalia

There exist many works in which futanari have extremely large male genitalia. In real life, the world record for the longest penis is 48cm, or 18.9 inches, but even that pales in comparison to penises in worlds where futanari have members as long as their legs, or in some cases, even bigger than the rest of their bodies. And that's when they're soft! With a penis like that, erections are quite something. Let's talk about what someone would do with such oversized genitalia.

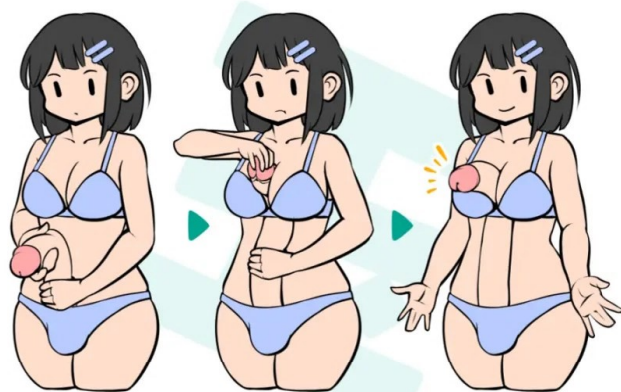
We've all made remarks like these when we've stumbled upon futanari with ultra-huge penises: "Surely you can't have a normal life with that," "That's gonna attract so much attention," or "It's definitely impossible to have sex with that thing." Sure, such a penis would be impractical and inconvenient from a realistic point of view, but we're talking about fiction here. Extremely well-endowed futanari may live perfectly normal lives in their own worlds, not stand out at all, and even be able to find suitable partners.



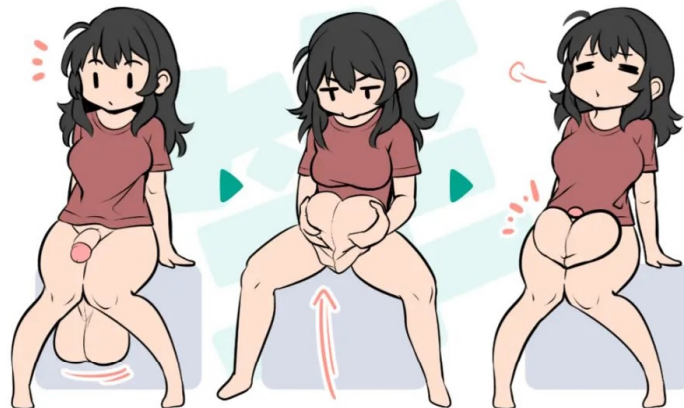
*Stomach deformation: when vaginal or anal penetration pushes against the stomach from the inside, creating a visible protrusion on the outside. More details on page 33.

Life hacks for giant dicks

Just like how large breasts or a big penis can be an annoyance for us, forcing us to find creative solutions so we're not uncomfortable, giant genitalia can affect everyday life and cause people to find little tricks and creative solutions in fiction. Depicting these challenges or not depends on the author, but I personally think that showing a futanari character's daily proceedings can make them shine even more..



Using the bra to hold the shaft

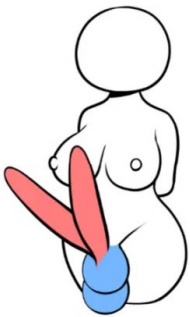


A relief for dangling balls

Multi dick? Hyper cock!? Giant sperm!?!

Anything is possible in fictional worlds, even very impractical situations or phenomena that make us say "She could never live a normal life like that," or "That would definitely kill her."

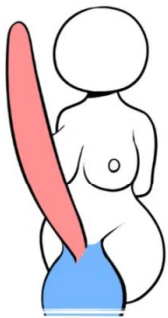
In short, there are so many ways you can alter a penis in fiction, and just as many things you can make it do. In this section, I'll list some extreme phenomena regarding the penises and their use that I've personally read in futanari works. Please note that I'm listing only one name for each phenomenon, and there may be terminological variations I'm unaware of out there.



Multi Dick/Balls

As it says on the tin, Multi Dick means a character has two or more penises; Multi Balls means they have three or more testicles, or multiple scrotums.* Whether to include Dick Nipples (see next page) in this count is up to personal preference. Characters can have both multiple dicks and multiple testicles at the same time, but it's not necessary.

**The number of testicles per scrotum can vary too*



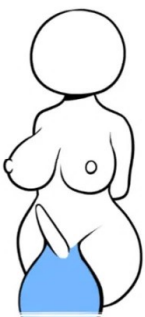
Hyper Cock/Balls

Following the progression we already introduced on page 19, genitalia size goes from Big to Huge to Hyper, from smaller to largest. The exact interpretation of Hyper varies from person to person, but most agree that the size of a hyper cock or balls is so egregiously out of this world that "big" or "huge" don't even begin to describe it. If the penis is hyper-sized, the scrotum usually is too and vice versa, but that's not necessarily the case.



Giant Sperm

There are normally countless individual sperm in semen, and sperm are only visible with a microscope. In the case of Giant Sperm, however, each and every single one spermatozoa is big enough to be seen with the naked eye. Such massive sperm often need a Hyper-sized penis to be ejaculated as well as appropriately large loads of semen.



Ball Inflation

Many phenomena can cause an enlarged scrotum, like unusually fast sperm production and/or Giant Sperm, magic or drugs, urethral sex (see next page) with a second party ejaculating inside the penis, or even testicular pregnancy (see "dick birth" on the next page). Regardless of the reason, this term indicates that the scrotum grows to an abnormal size. It can refer to the growth process itself, the final result, or both.

Stomach Deformation



Due to the outrageous length and girth of Hyper-sized members, penetration can cause the partner's stomach to bulge visibly.

Cum Inflation



A pregnancy-like swelling in a character's abdomen caused by internal ejaculations so incredibly large as to be impossible in reality. Some works feature loads so big that the stomach of the receiving character swells up even more than if they were actually pregnant.

Self Tit-job



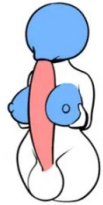
When a futanari character uses her own breasts to stimulate her penis.

Self Blowjob



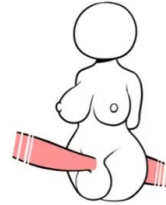
When a futanari character uses her own mouth to perform fellatio on her penis.

Self Tit-job & Blowjob



When a futanari character performs both a tit-job and a blowjob on her penis at the same time.

Self Fuck



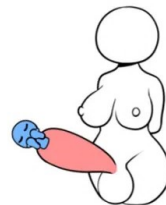
A futanari character achieves penetration (vaginal or anal) on her own body. This can be achieved thanks to a long and flexible penis, or with the aid of supernatural power or highly advanced technology to open a portal of sorts between her penis and vagina.

Urethral Sex



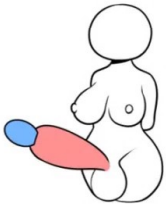
When a penis penetrates the urethra of another penis. Because of the necessary size difference, the recipient usually has a Huge or Hyper-sized penis. There are also cases when the penetrating partner has an exceedingly small penis, or is a miniature person. Intra-urethral ejaculations can optionally cause fertilization and pregnancy as well.

Dick Birth



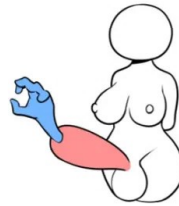
Childbirth where the newborn comes out of a futanari's urethra and penis. The penis may be connected to the uterus, or the male genitalia may have a special organ for birth and pregnancy (testicular pregnancy). In the former case, a pregnant futanari will have an enlarged belly during pregnancy, in the latter, the scrotum will expand instead.

Dick Egg-laying



The expulsion of eggs through the penile urethra; said eggs are either produced by the futanari, or were laid there by something else. Like with Dick Birth, egg laying may follow a visible swelling of the stomach or scrotum.

Cock Vore



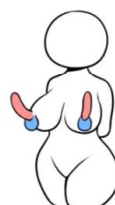
A subset of vorarephilia, which is commonly known simply as "vore," which applies specifically to characters being consumed whole by a penis (often Hyper-sized) through the urethra. The one being absorbed may end up in the scrotum.

Dickification



An extreme type of fictional body modification in which one or many parts of a person transform into a penis or penises, such that the character's dickification becomes their most prominent feature. Dickification may involve the head alone, but breasts can also become a scrotum, or the entire body can be morphed into a penis.

Dick Nipples



When nipples are shaped like penises, or are actual fully-functioning penises. Dick nipples can have their own balls or not, depending on the work in question. The same goes for what these nipples can secrete: milk, semen, or something else entirely.

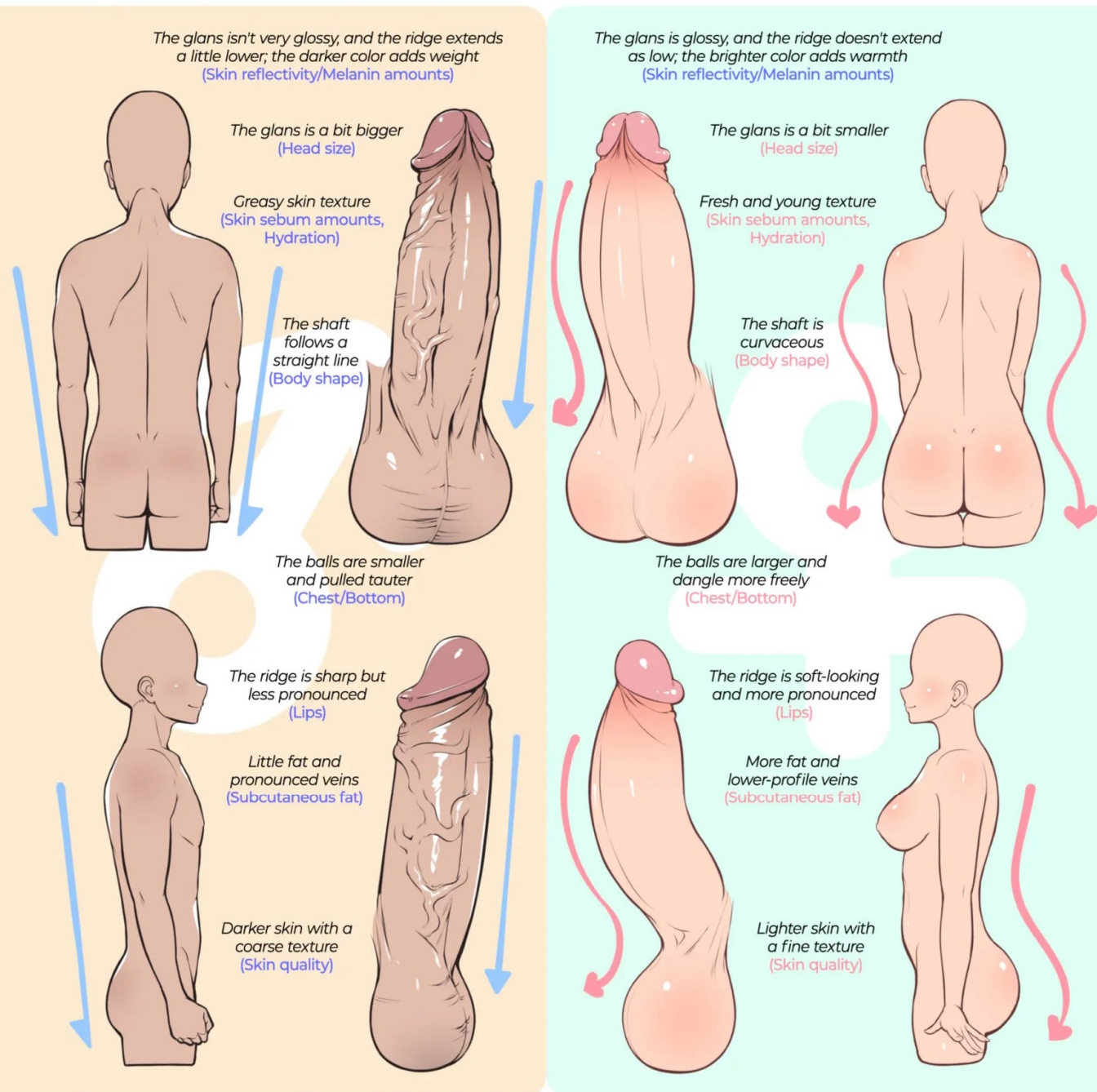
How to draw futanari

This section will focus on the differences between male and female bodies. In particular, it will explain how to apply feminine features to male genitalia, how to caricature the penis to highlight its charms with several ideas and suggestions. Still, keep in mind they're just that, suggestions; you don't need to follow all, even any of them! You can keep doing your thing with your own art.

Furthermore, everything you're about to read is the result of my own personal research based on the skin color and other physical traits of Japanese people in particular. There are countless skin colors and body types around the world, and everyone is unique; if you wish to read an academic and accurate treatise, this is not it. If you want a broader discussion on this topic, I strongly suggest you do your own research.

Caricature of the penis based on male and female body features

The term in parentheses is the trait being transferred

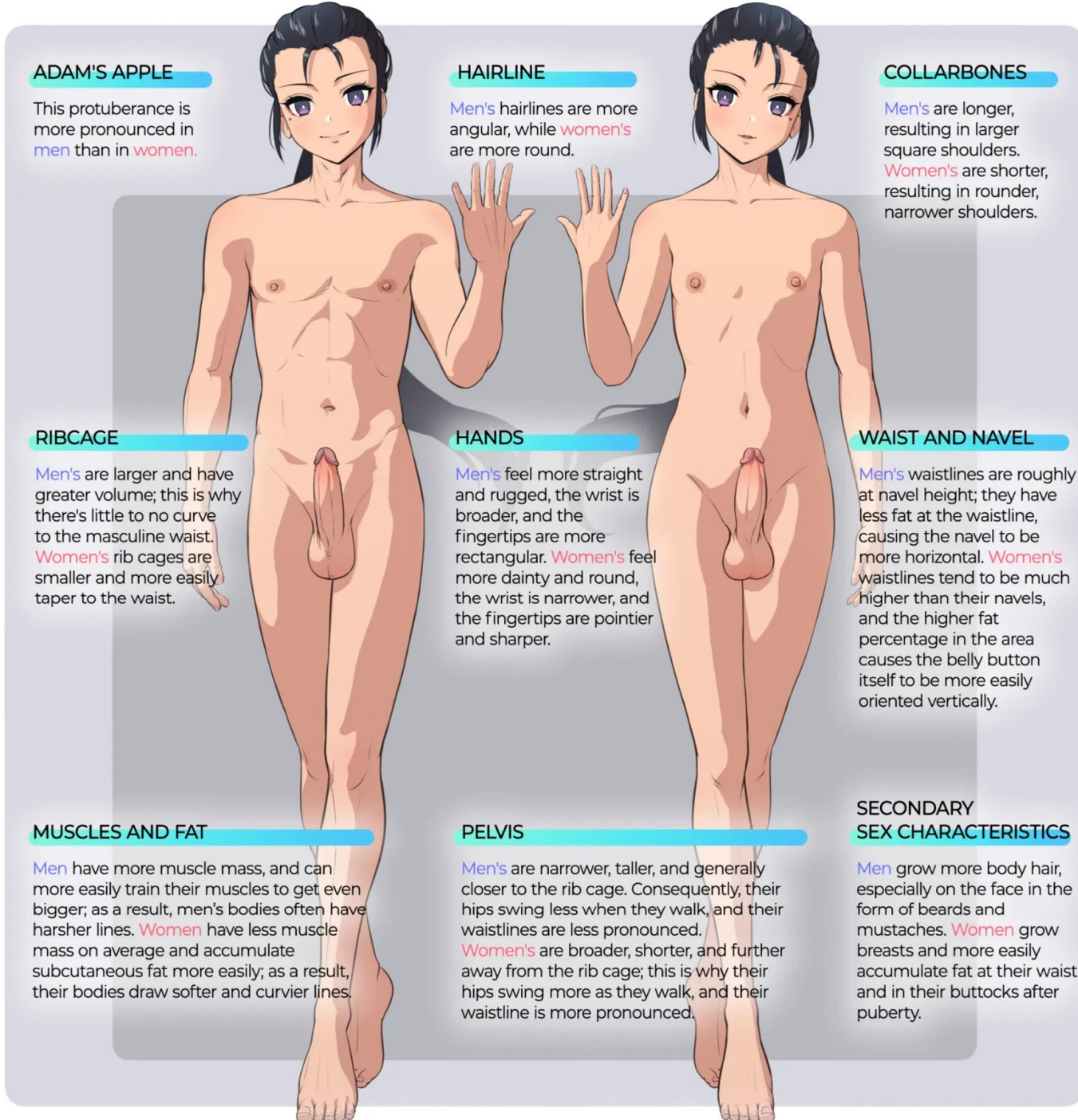


These are simply ideas I came up with, entirely based on personal research and experimentation. Furthermore, idealized feminine features might not be optimal for a futanari penis; a typically masculine skin texture might be more appropriate for a female-bodied futanari, or a penis with feminine features might be better when the character's other characteristics are more typically masculine. Try to choose the features of a character's penis on a case by case basis.

The body of a futanari

We don't have to focus exclusively on the genitalia, of course; we can also further highlight a futanari's characteristics with the design of the rest of their body. We could use large breasts and buttocks to make them more easily recognizable as a futanari, but a truly androgynous look is impossible to achieve relying on those characteristics alone, and adding them eliminates the possibility of a slender character altogether.

Muscle, fat, and a character's build in general can tell us about them and their personality, but masculine or feminine characteristics seldom emerge solely from those broad features. Let's try to strip all of that down, and instead pay more attention to masculine and feminine skeletal structure as we draw them side by side.



These are all general considerations on average physical differences between men and women, but that doesn't mean they apply to everyone. Some people may be fatter, some may be thinner, and one's constitution can be influenced by many factors, like unique genetic disposition toward muscle mass and body fat.

There are of course many more minute differences between the sexes that can be used to draw masculine and feminine characters. Going into too much detail about this is not the purpose of this book, but if you're interested in learning more, you can look up works where others do a much better job than I have. Furthermore, there are other things that can be done to stress a character's femininity or masculinity, like for example mannerisms or poses, but since those elements all go beyond physical characteristics, you can't rely on them with any consistency, and they haven't been included in this section.

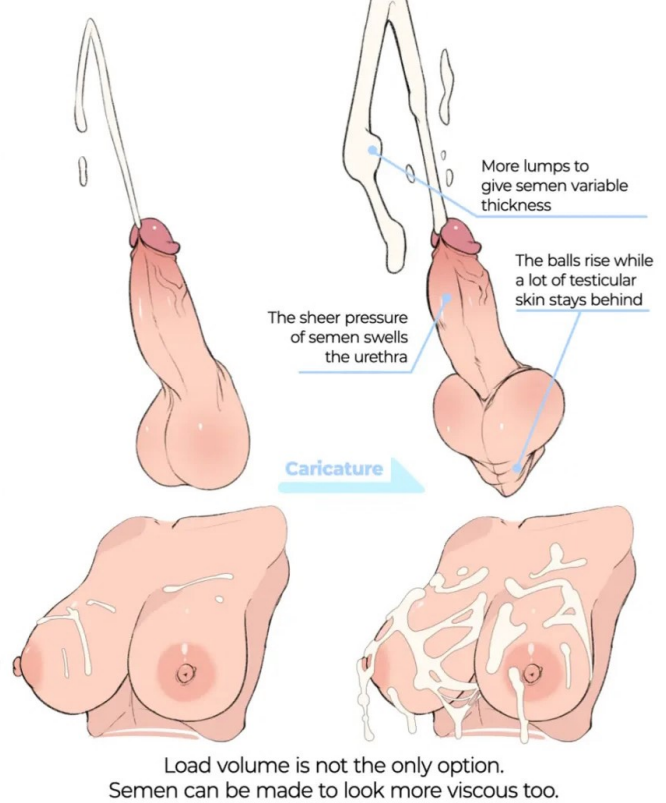
The body of a futanari

BALLS DURING EJACULATION

The testicles are naturally drawn toward the penis during ejaculation. While this is noticeable in real life, between physiological differences among individuals and what a small movement this actually is, it's very easy to miss it unless you're specifically looking for the phenomenon. So, unless you're going for a hyper-realistic style, you have the option to make the testicles and scrotum really hug the shaft during ejaculation.

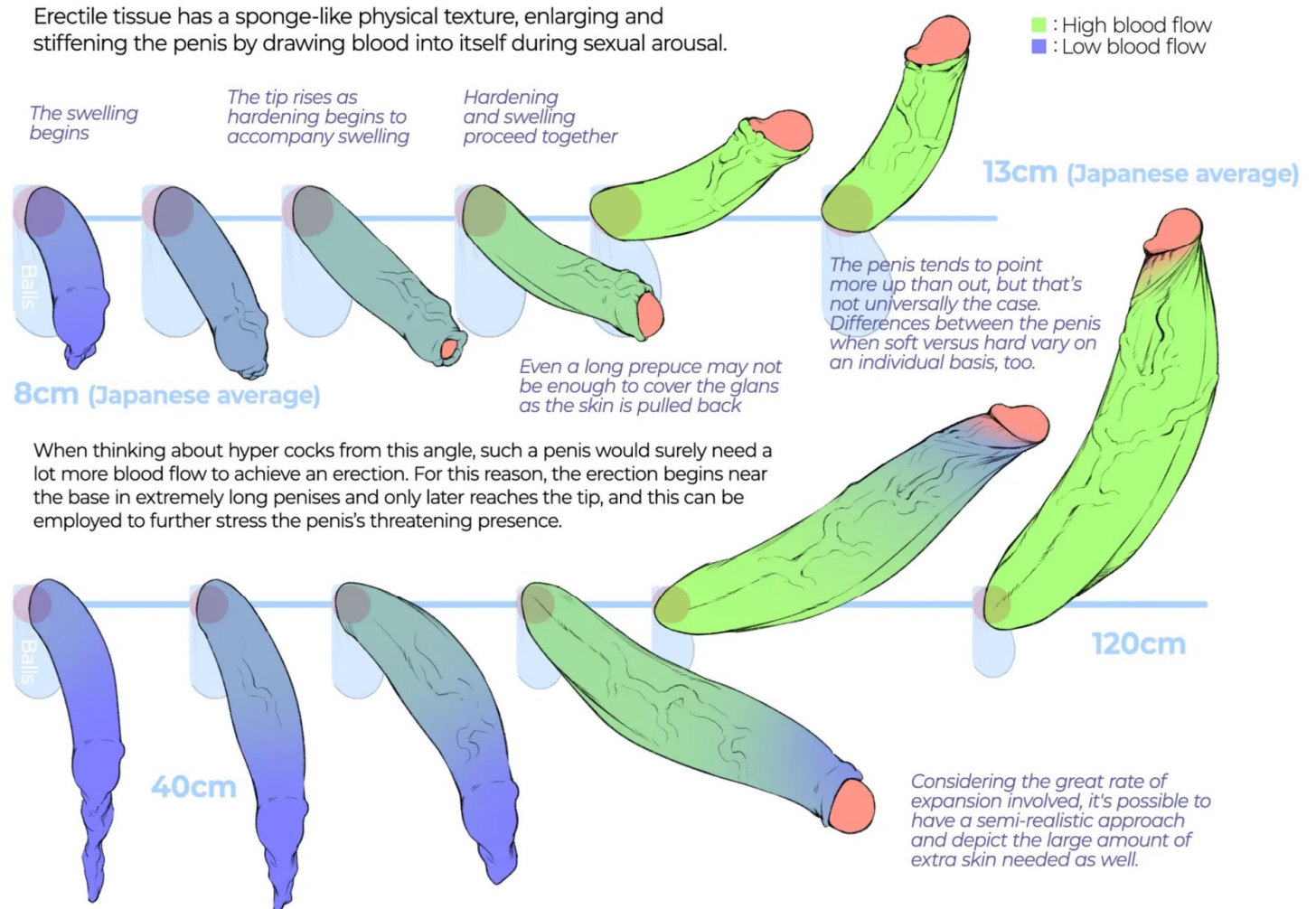
EXAGGERATED LOAD SIZE

You can even take liberties with things besides simple anatomy; for example, you can also exaggerate the volume of semen loads. Ejaculation is nowhere near urination in terms of the amount of liquid expelled. In fact, the average Japanese man can produce only between half and a full shot glass of semen in an ejaculation. Therefore, load size is one the best features to exaggerate a bit.



Erections and blood flow

Erectile tissue has a sponge-like physical texture, enlarging and stiffening the penis by drawing blood into itself during sexual arousal.



When thinking about hyper cocks from this angle, such a penis would surely need a lot more blood flow to achieve an erection. For this reason, the erection begins near the base in extremely long penises and only later reaches the tip, and this can be employed to further stress the penis's threatening presence.

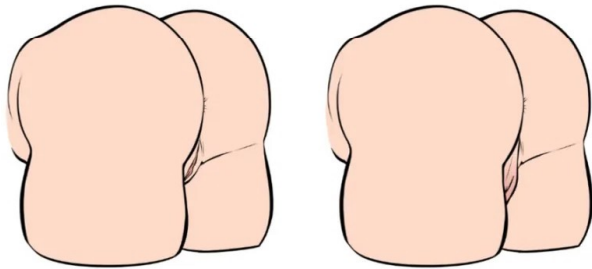
Thinking about blood flow in this fashion can help to increase realism in your art. You may even have worlds where erections this big cause a drop in blood pressure and affect blood flow to the brain! Conversely, you can also imagine erectile tissue that needs much less blood to stiffen, making the above perfectly viable. It all depends on the erection you want to depict, and on the world you create.

The explanation of the process above is based purely on my personal research. While it is based on medical information, it may still contain grave mistakes.

Details are the key to quality

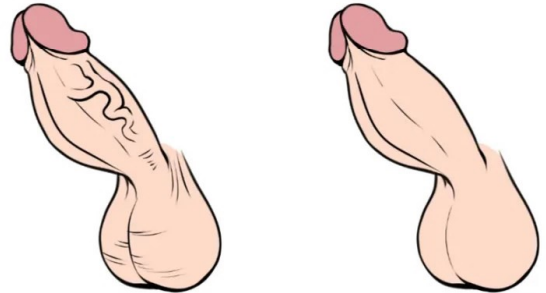
In order to increase the quality of your artwork, you must strive for realism and draw a lot... Or not! But I do think it's important to understand such principles in order to improve. Knowing what you're doing can increase attention to detail and become a foundation that empowers your creativity.

Be aware of genitalia, whether you draw them or not



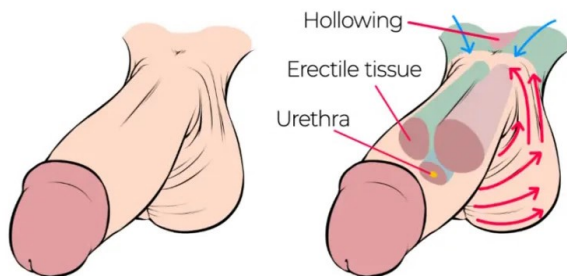
Some angles make the scrotum and female genitalia hard to see, but it's important to know they're there and plan accordingly. The left image has female genitalia, while the right one does not.

Simple wrinkles and veins are fine



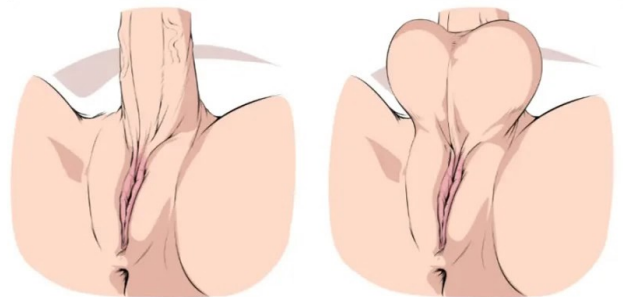
It's possible to add wrinkles and bulging veins to male genitalia, but they can also be simplified or removed altogether. The left image has them, while the one on the right is more stylized.

Anatomy and skin flow



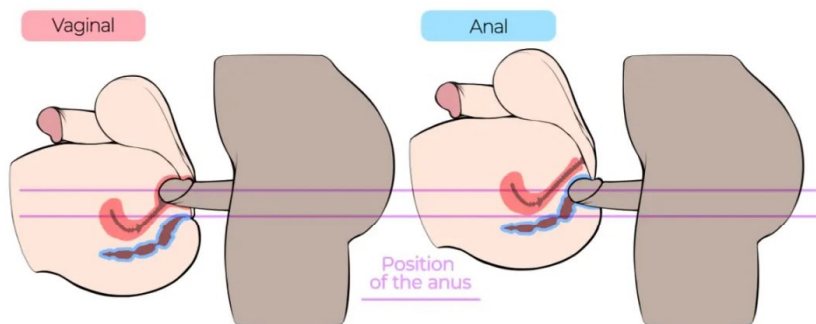
You can show that the skin of the scrotum is loose by choosing the direction and flow of its wrinkles (red arrows). Furthermore, due to the tautness of the skin near the base of the penis (blue arrows), there can be a slightly concave part here as well. This aspect can change from person to person.

Connecting male and female genitalia



Determining how a futanari's male and female genitalia connect to one another is the true test of mettle and creativity for any artist. Please keep in mind that they have to connect regardless of whether a scrotum is present or not. The left example doesn't have one, while the right one does.

Angle and point of penetration



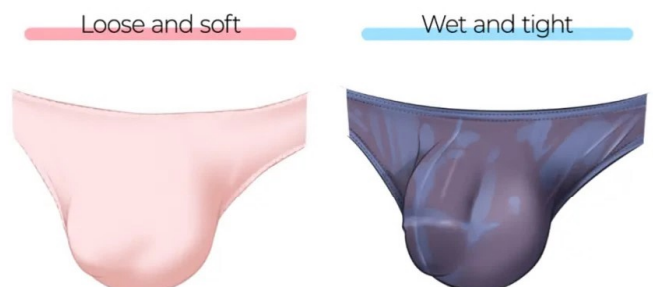
While futanari have penises, as we all know by now, they also have vaginas and anuses, allowing them to have sex with two different orifices in their crotches.

You should strive to be aware of the angle of penetration even if it's hidden by legs and regardless of whether it's vaginal or anal penetration. (I'm not saying you should draw it out for every single panel, only that it's important to have a clear idea about what's going on at all times.)

Bulges

The bulge a penis creates in clothes and underwear depends on the type of cloth: soft fabric will result in a softer bulge, while a stiffer or tighter fabric can result in a sharper impression. Still, it's important to remember that underwear and the like never really adhere to the penis as if the cloth were drenched, and only a fuzzy outline can be seen in most cases.

When going for a stylized representation of a bulge, you can show sharper and more defined edges regardless of the fabric involved. Just because it's impossible in real life, that doesn't mean it can't be part of your style; just be aware of what you're trying to achieve.



Tip Slip

The bulge in fabric caused by a penis shares quite a few characteristics with the bulges of breasts. Actually a slang term for it is chichibukuro (乳袋), which normally describes the curve in a woman's clothes caused by her bosom.

Should I put up some warnings when I publish futanari content?

Personally, I think that there are no rules to observe or precautions to take when it comes to futanari. As we've established, the only key feature of futanari is that they have two sets of genitalia, male and female, and the rest is up to you. Things like body shape and Hyper cocks can be freely added, and you can give your futanari characters balls or not. There are no hard rules. The same goes for the stories and scenes you write.

You sometimes see "Warning: Futanari" on the cover, but that doesn't mean it's mandatory. Still, there are, of course, times when we feel compelled to make a work's content clear to avoid trouble or dogpiling, like for example when creating doujin and fanart about famous franchises with well-established headcanons. But regardless of the original work, the final choice of how to label a fanwork is up to the author.

At the same time, I've been framing these labels as warnings so far, but they don't have to be seen in a negative light. You can see doing something like this as an advertisement and clear signal for like-minded people! That's what many authors choose to do. If you do, too, it might help someone discover your work!



Can I ask an artist for a non-futa version of their work?

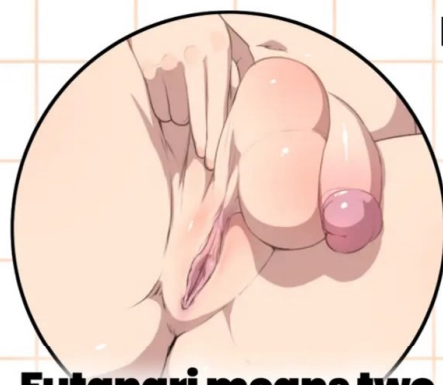


For once, this question isn't from the perspective of the author, but from that of an audience member. The response will change wildly depending on the author, so I can't give you a definitive answer.

What I can tell you is that any change you ask for, whether it's about futanari or something else, might undermine the very reason why the author drew a piece in the first place, so please think hard before asking something like that. I'm not saying you should never do it, or that you're free to do it whenever you please, just to be careful. Also, please be careful even with authors who commonly put out variants because they may have changed their habits.

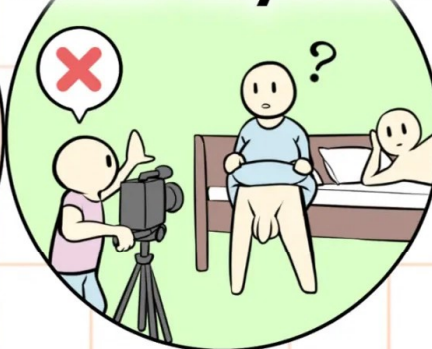
Conclusions

Well? After all is said and done,
how much did you know about futanari?
Hopefully you learned something new!
Let's quickly review everything we've covered!



Futanari means two sets of genitalia!

Futanari exist outside of adult-only media!

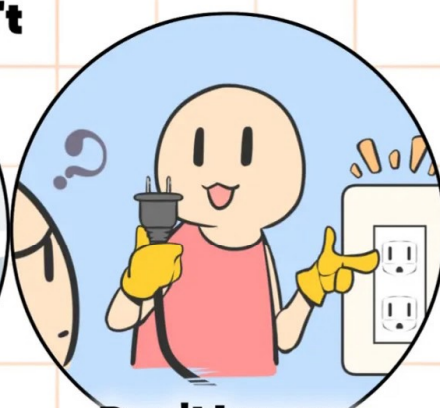


There are lots of words to refer to futanari!



Futanari are different depending on the world they live in!

Liking futanari doesn't necessarily imply sexual preference!



Don't harass people who don't know things!



Welcome to the afterword, where I'll go over some details regarding how this book was made.

I actually got the idea to make this quite a long time ago; what I wanted was to help futanari become more mainstream during a time when they weren't so popular. But nowadays? You can search for "futanari" on social media and art aggregators and get hundreds of thousands of results! I almost felt like there was no point in writing it anymore... But at the same time, I still see plenty of people asking what futanari means, or with misconceptions about them, so this book is as current as ever due to how many new people discover the concept all the time. So, instead of considering myself late to the party, I returned to the idea of this book to yet again express my love and passion for futanari!

Are you more interested in or curious about futanari now?

I'll be very happy if this gave you new ideas or opened some new doors!
I solemnly swear I'll continue making lots of futanari content moving forward! See ya!

Circle: Nekoarashi
Author: Yana
Cover logo: LIN (<https://twitter.com/NSFWLIN1>)
Homepage: <https://nekoarashi.com/>
First Edition: 14/8/2022 (Comiket 100)

English Adaptation: 2D Market
Website: <https://2d-market.com/>
Adaptation Staff: ZenHigh, Joseph Barr, Carrie Handler, John Connor

*This work is based on personal research and considerations.
Any reference to real people, works, and organizations is entirely coincidental.
Also, please don't contact the authors or publishers of the works I mention throughout this book.*

Homepage

